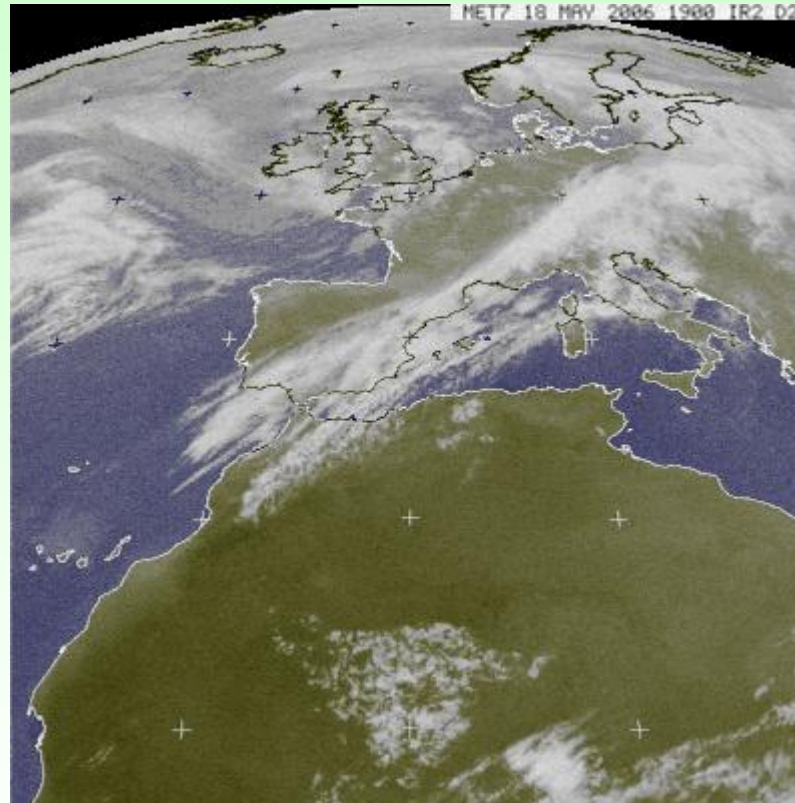


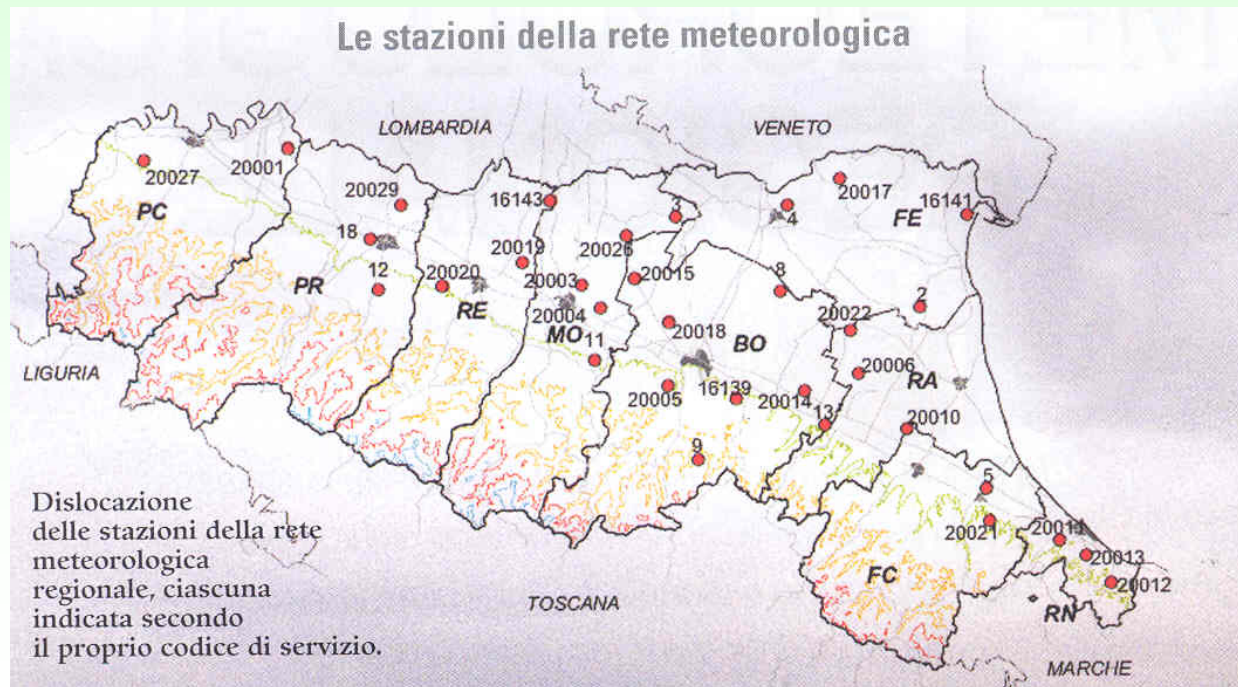
The meteorological Service



How we collaborate

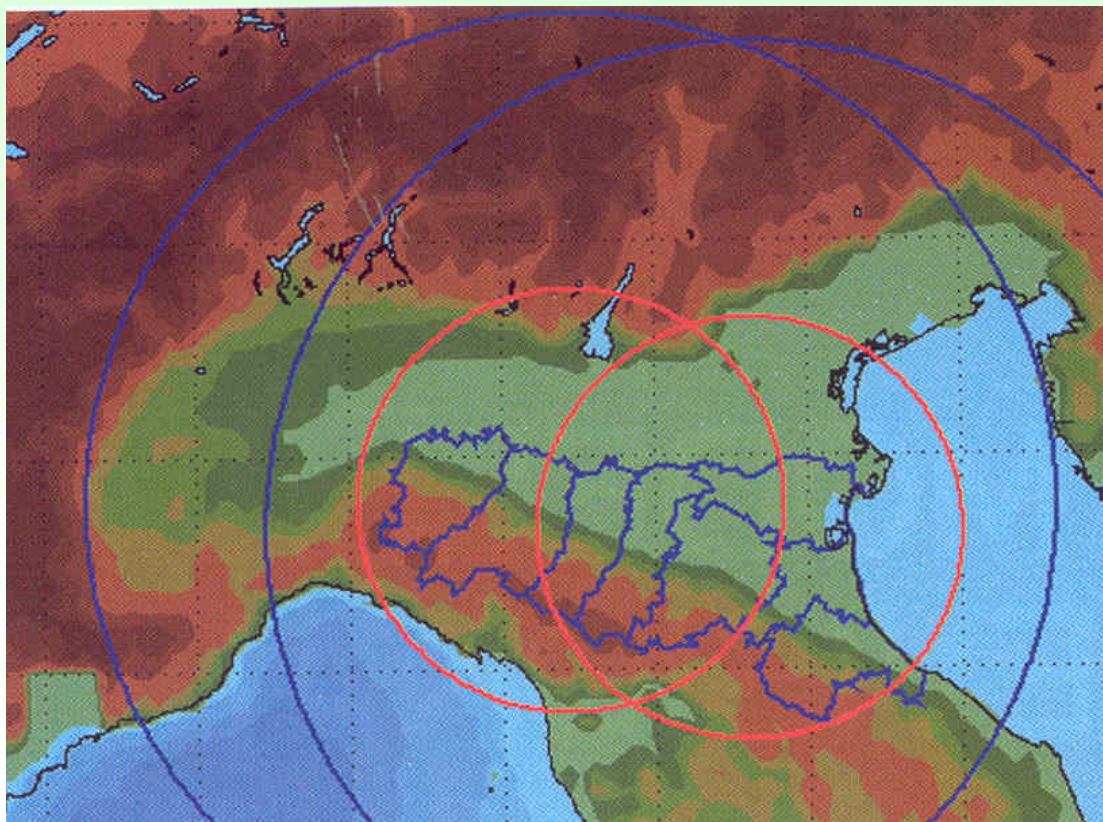
Regional Meteorological Service

- met-station network
- 10 synoptic met-stations

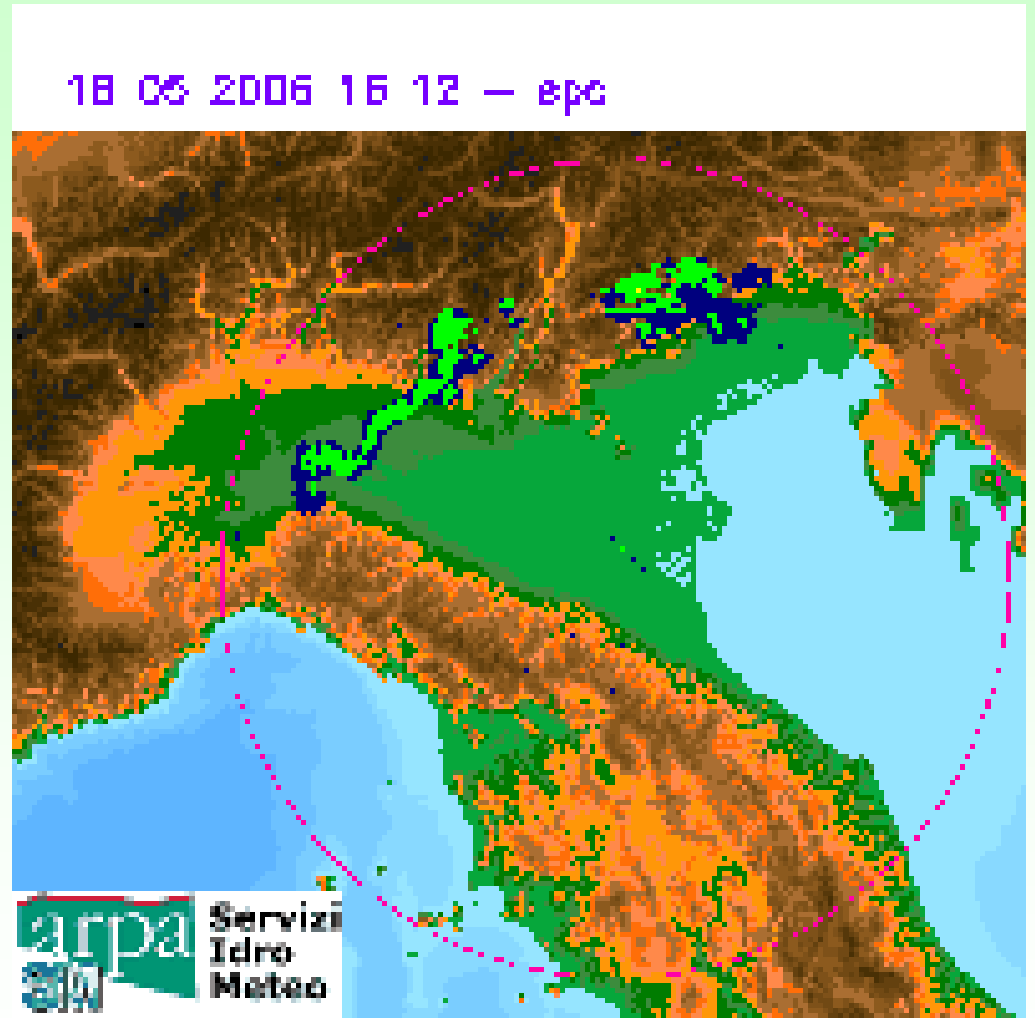


Meteorological Service

- 2 radars for rainfall estimation covering the regional territory

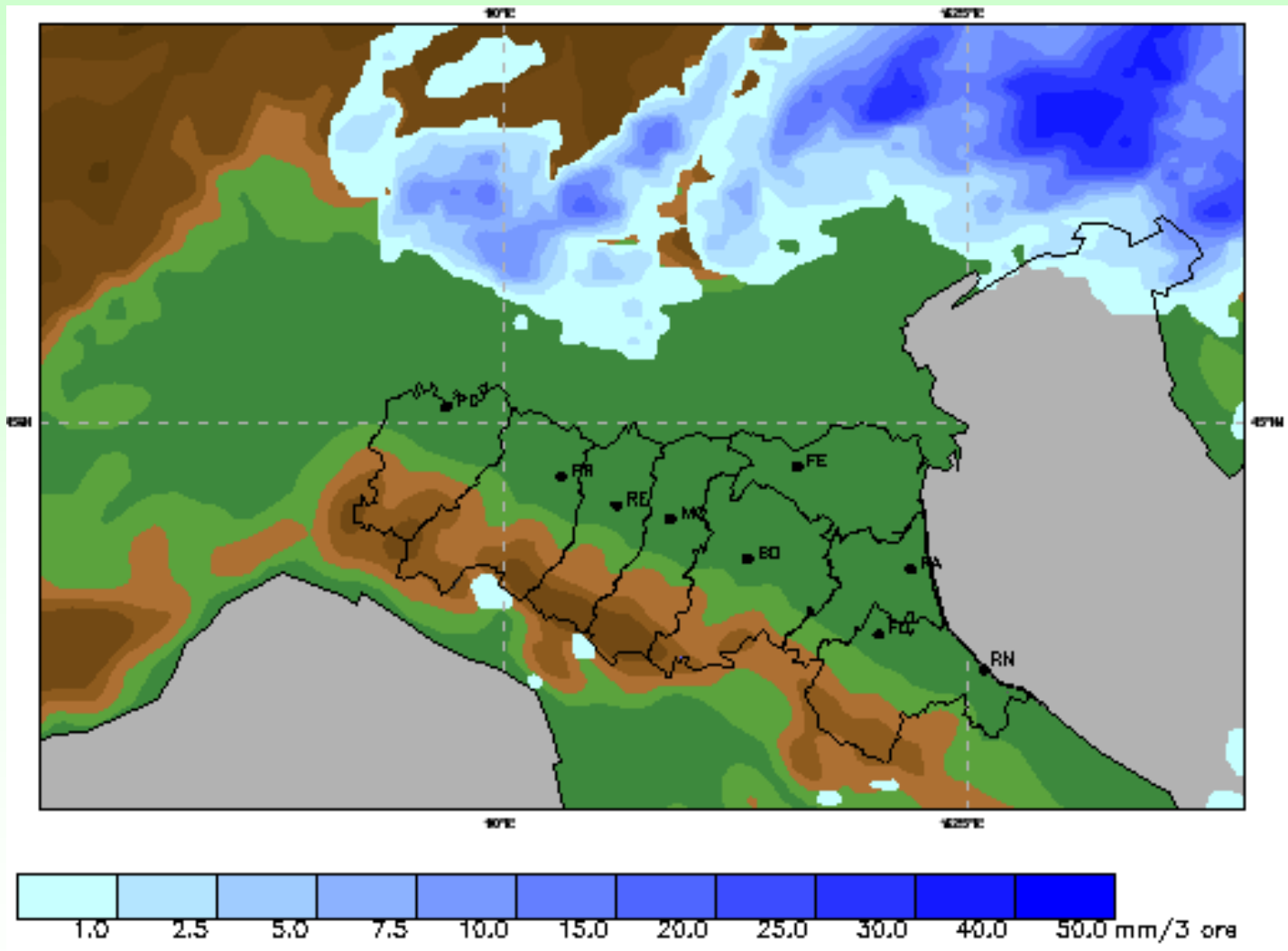


Hourly radar Rainfall estimation

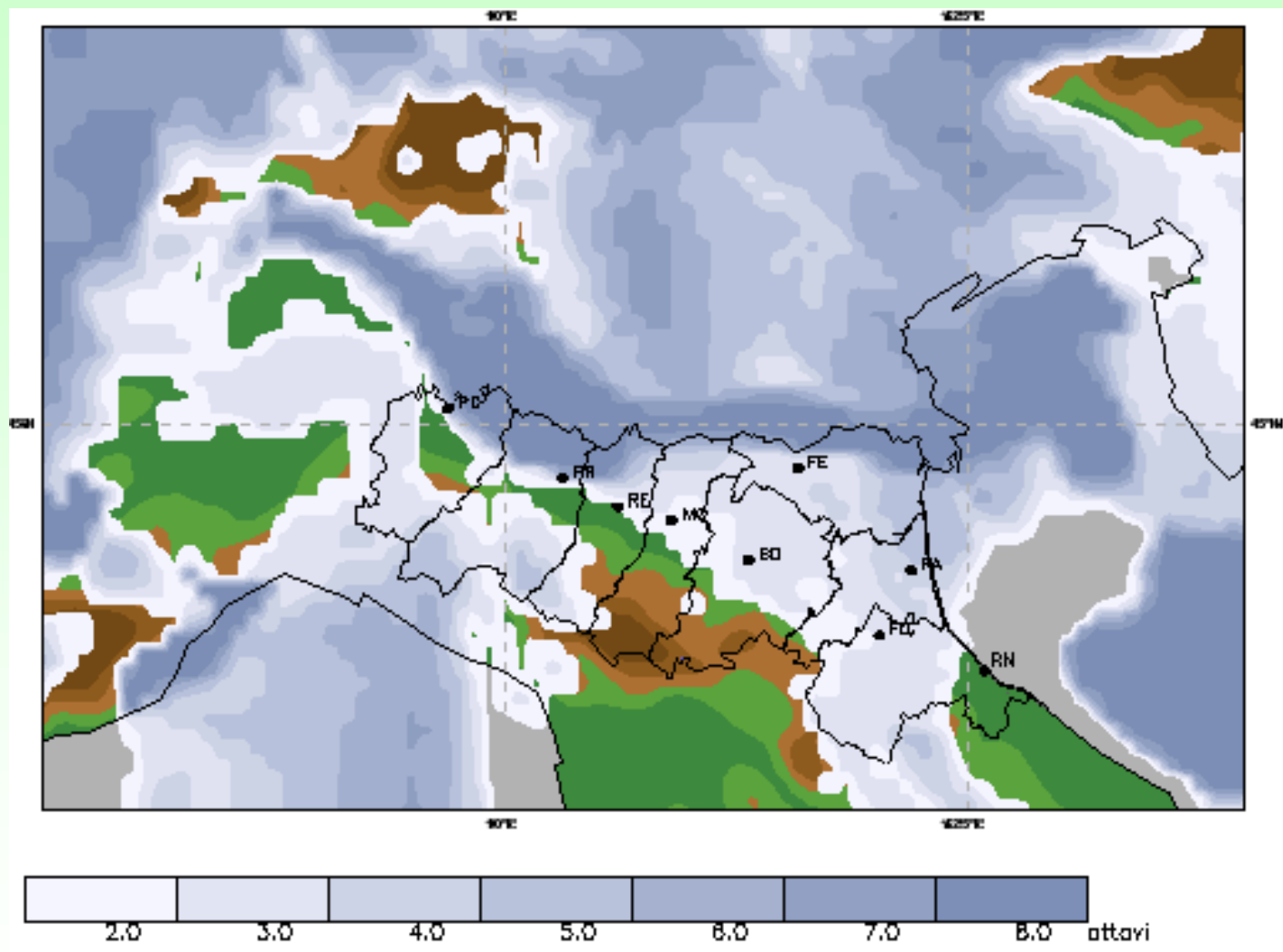


Meteorological Service

- Services
 - 3 days forecasting
 - Late frost forecasting
 - Pollen and spore monitoring

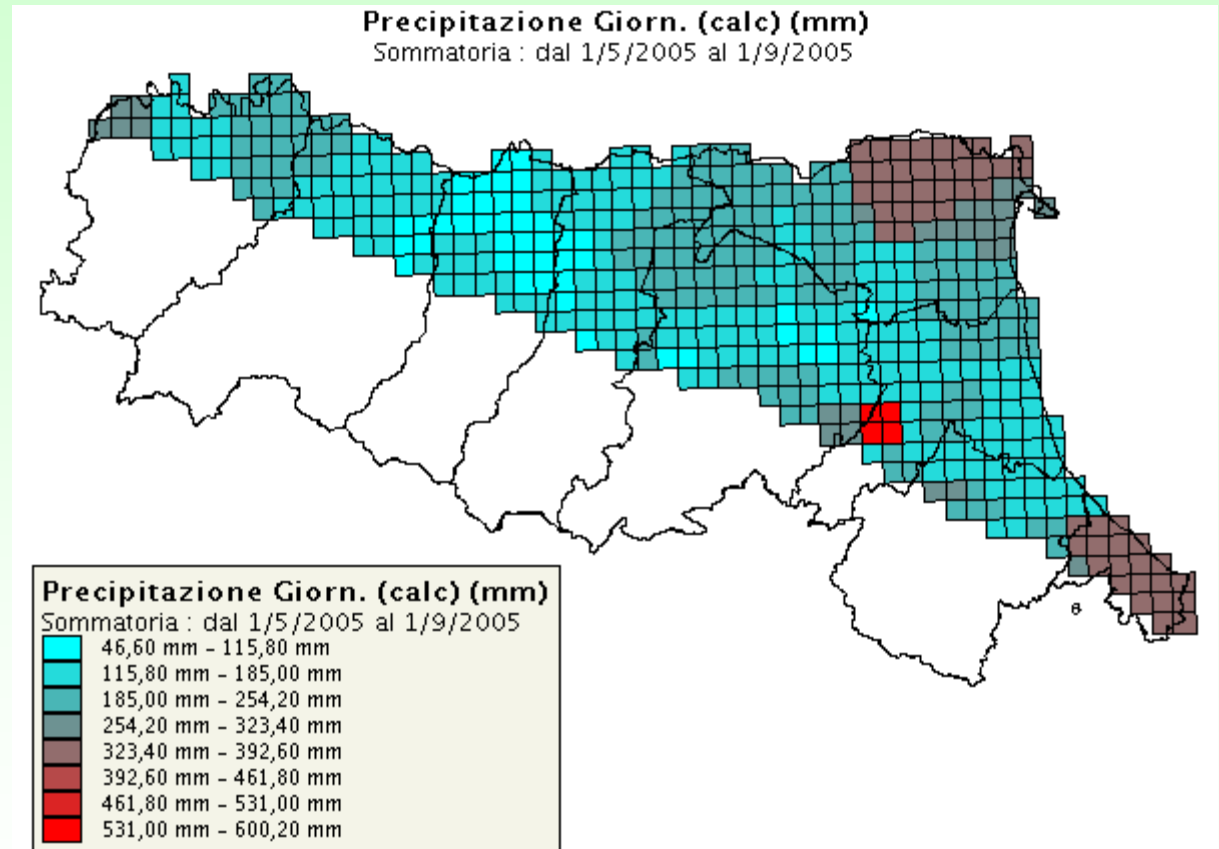


6 hour based Rain forecast

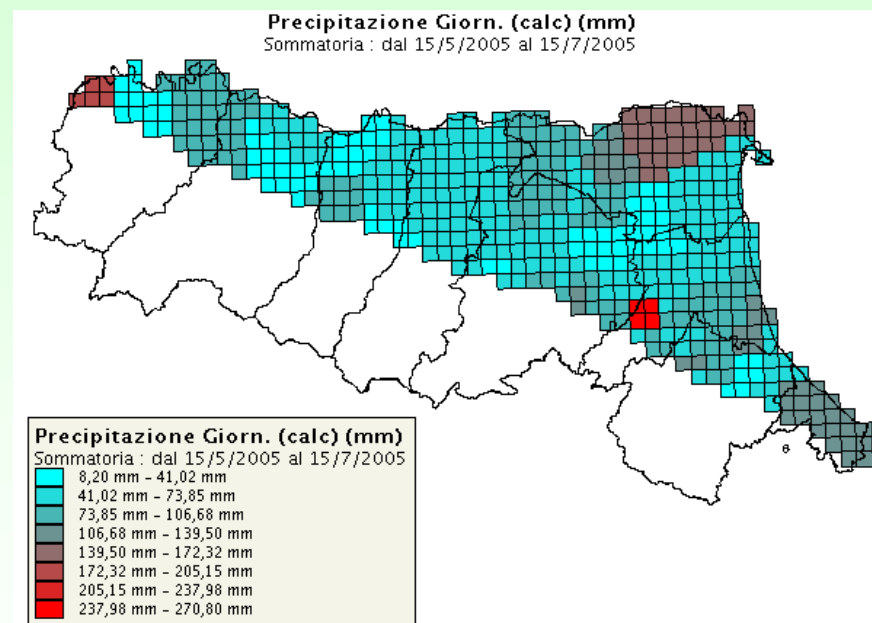
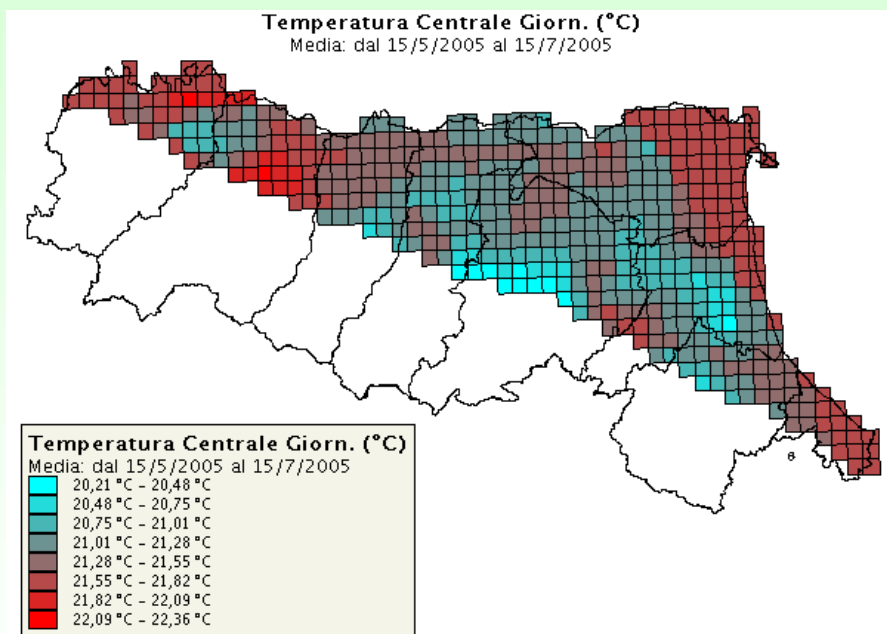


6 hour based Cloudiness forecast

Cumulated precipitation in growing season in 2005



T.Av and cumulated rain during potato growing season in 2005



T.Av and cumulated rain during tomato growing season in 2005

