



EU PHARE Twinning Light Project Phare SL 03/IB/AG/01/TL

The Italian national and regional IPM guidelines: organizational framework and an example from Liguria

Giuseppe Stancanelli, Regione Liguria, Dept. of Agriculture,
Regional Plant Protection and Inspection Service
Section of Genova (IT)

Ljubljana, 23th May 2006

EU regulations promote an agriculture more environmental friendly

- EEC Reg. 2078/92

Promotes an environmental friendly agriculture, in particular funding farmers for major expenses or less revenues due to environmental protection, reducing fertilizers and pesticides

- EC Reg. 1257/99 measure F(6)

Within the rural development framework, measure F(6) is for environmental friendly agriculture, i.e organic farming, **IPM**, soil erosion prevention, biodiversity preservation etc.

- EC Reg. 1698/05 on rural development

- ✓ Axis 2A: agro-environment
- ✓ Axis 2B: environmental forestry

The national and regional IPM system

In order to uniformly evaluate the IPM guidelines produced for the EC Reg. 2078/92 by the 20 Italian regions and autonomous provinces, a Technical Evaluation Committee is established at the Ministry of Agriculture composed by 10 regional IPM experts.

The Technical Committee, on the basis of several years of experience in evaluating and suggesting modifications to the regional guidelines, produce the National IPM Guidelines which are approved by EU Commission and will be used for submission or updating of regional IPM guidelines both for EEC Reg. 2078/92 and later for EC Reg. 1257/99.

The national and regional IPM system

The main principles of the national IPM guidelines are to reduce the input of pesticides and fertilizers and to avoid using plant protection products risky for the environment and for human being, but still maintaining a production level economically worth for the farmers.

As a general rule Toxic (T and T+) pesticides were banned from the IPM guidelines, similarly the use of Noxious (Xn) compounds was limited to cases where no other alternative efficacious plant protection products were available. Since 2006 products with carcinogenic or high environmental risky labels were also excluded. For all crops, the maximum total number of treatments per season was evaluated for each pest/pathogen or for pesticides group, based on scientific/technical references or experimental data provided by each region.

The challenge of the new IPM guidelines

Since September 2005 the national integrated pest and disease management committee (Comitato Difesa Integrata, CDI) at the Ministry of Agriculture is composed by 20 regional IPM experts (1 from each region), 2 scientists from the national Research Institutes of Plant Pathology and Agriculture Zoology , and the Director of the POSR2 Dept. of the Ministry of Agriculture as Chairman

The CDI mission is to produce the new National IPM Guidelines within Sept. 06 and then to evaluate the proposed Regional guidelines in december 2006. According to the results of the present european revision of plant protection products, it is at the moment under discussion whether to ban from IPM guidelines also all Xn products.

Furthermore, the national IPM guidelines will be the technical base of a national certification scheme for integrated pest management crop production

IPM guidelines in Liguria (IT)



Liguria key data:

Total surface: 5420 kmq (65,1% mountain, 34,9% hill); Coast line: 335,9 km;

Population: 1.571.783;

Population density: 290 inhabitants /kmq.

Summary of Liguria agriculture

Total Agricultural Utilizable Surface = 64.713 ha

Total number of farmers = 44.266

Average Agr. Util. Surface per farmer = 1,49 ha

Olive 13.365,44 ha

Vineyard 2.391,24 ha

Fruit trees 2.520,40 ha

Citrus 137,56 ha

Nurseries 94,28 ha

Flower and ornamentals 2.750,84 ha

Vegetables 1.681,85 ha

Cereals 1.089,42 ha

Forages 1.989,30 ha

Pastures 35.325,04 ha

IPM guidelines in Liguria

Olive

Vineyard

Nocciolo

Chestnut

Cut green foliage (ornamentals)

Lavender

Cereals

Forages

Pastures

Regional IPM projects in Liguria

Olive (since 1988 until today)

Vineyard (since 2002)

(Several local projects in ornamentals and vegetables production:
ruscus, aralia and other green foliage crops; gerbera; rose; orchid;
lily; poinsettia; ciclamen; tomato; pepper; zucchini; basil)

The actual regional agrometeorological and IPM network

CMIRL

Meteo idrological center of Regione Liguria

*Collecting, analyzing and modelling
meteorological data from 70 stations;
weather forecasting; providing analysis of
agrometeorological data to CAAR*

CAAR

*Regional Center for Applied Agrometeorology
of Regione Liguria*

*Providing technical service and extension for
agriculture, forestry and environment.
Olive and vineyard IPM projects*

Servizio Coordinamento Ispettorati Agrari

*Regional Service for Agriculture Inspection and Plant
health of Regione Liguria*

*Controlling the application of IPM guidelines
Permit for additional treatments*

*Inspections and monitoring for plant quarantine pests
and diseases*

CMIRL

*Meteo idrological center of Regione
Liguria*



Previsioni
Mappe da modelli

Satellite
Dati osservati

Links meteo
Servizi agli utenti

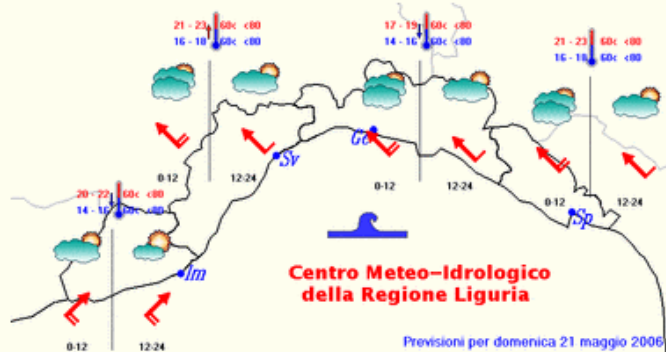
Eventi meteo
News

A.R.P.A.L

Protezione Civile

Chi Siamo

Dove siamo



Sistema Qualità

Contattaci

NEW Pubblicazione Annali

Nuovi messaggi del Centro Funzionale



Previsioni
Mappe da modelli

Satellite
Dati osservati

Links meteo
Servizi agli utenti

Eventi meteo
News

Bollettino della Liguria

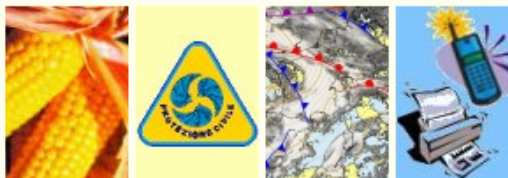


Esame sinottico

Bollettino del mare

Previsioni settimanali

Previsioni Agrometeo



Analisi dei fronti

Avvisi meteo-idrologici

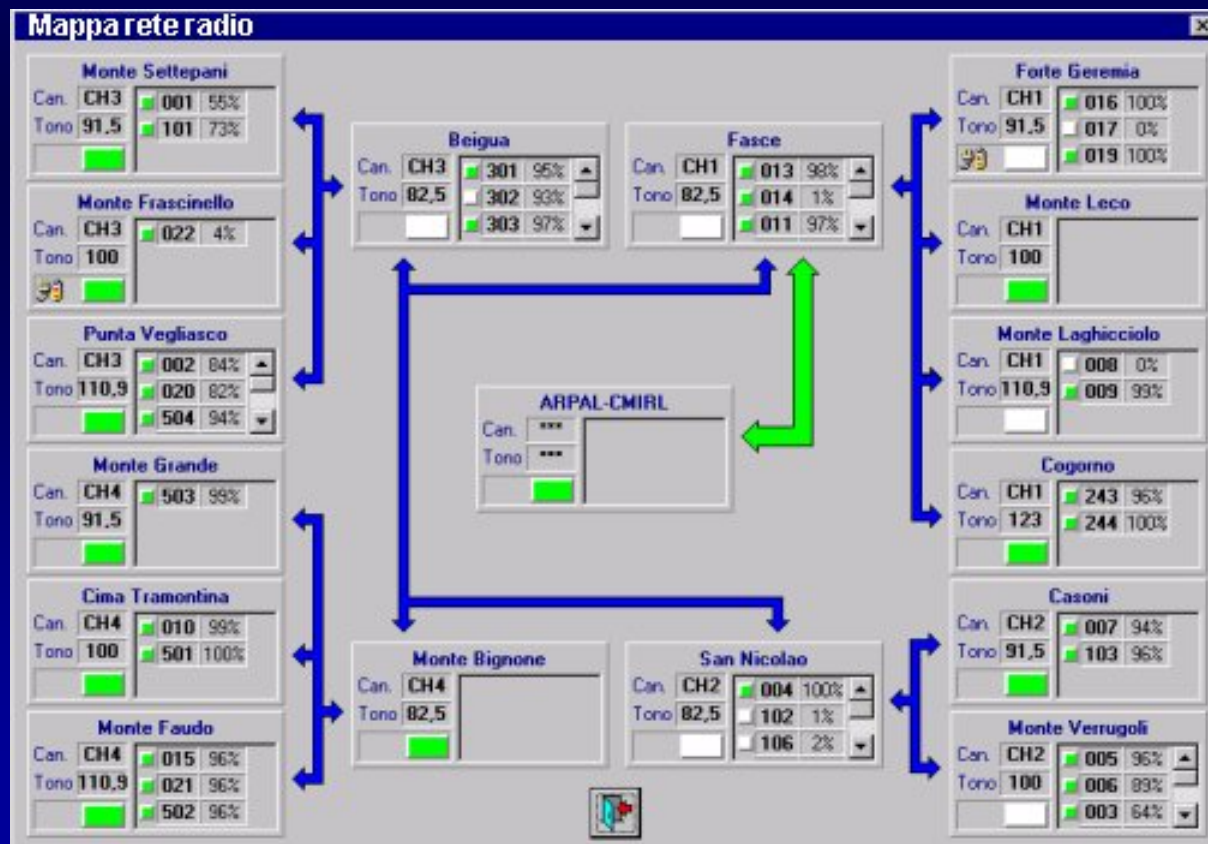
Ricevi le previsioni via SMS e FAX



Processo Previsionale **Meteoidrologico** e **Meteomarino** certificato UNI EN ISO 9001:2000

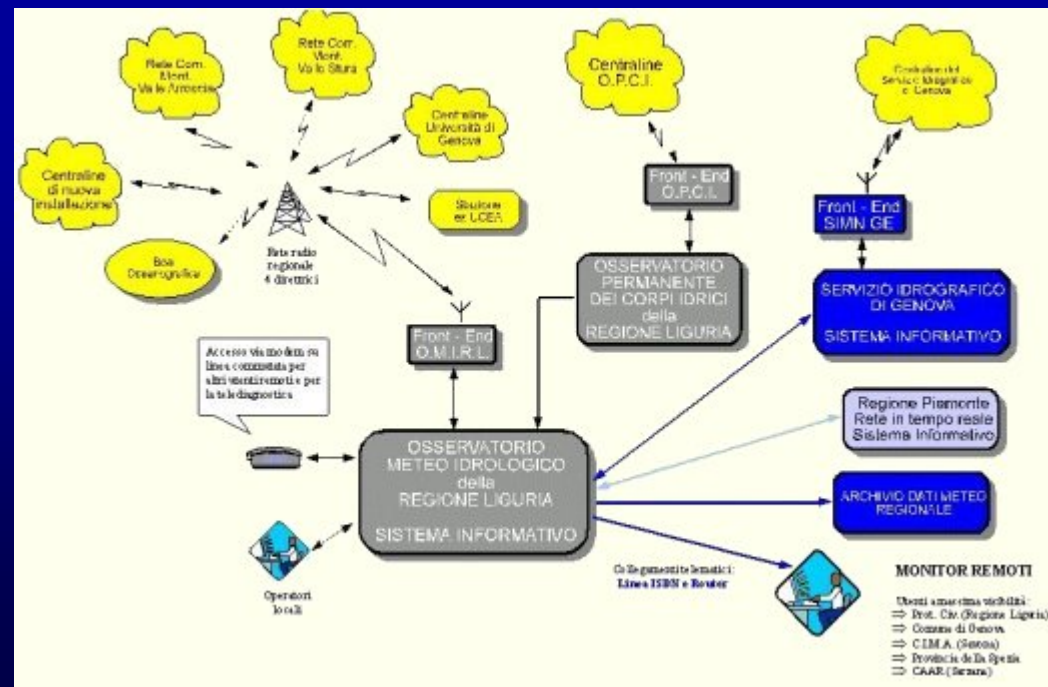


CMIRL works according to Regional laws 45/1994 e 45/1996, for “the need of having an observational network to monitor rain data in real time, especially in case of intense rains and in interconnection with all other meteorological network operating in Liguria.” Regione Liguria participates, together with local authorities, CAAR and AMGA gas and water company, to the funding and technical improvement of CMIRL. CMIRL started to work in 1998-2000 and continuously monitors meteo conditions with 70 stations transmitting the sensors data to the Control Center. The signal travels through a net of repeaters that allows to cover the territory of Liguria for more than 90% and to acquire all data in ca 5 minutes.



The Control Center is by a Hardware/Software system which allows:

- Data acquisition from meteo stations directly connected and through radio connections from meteo stations of other integrated nets
- Archiving the data in a single relational Database
- Data validation
- Statistical analysis of the Data
- Visualization of all the net in a synoptic picture;
- Redistribution of data to other users.



The Acquisition Center is made by an architecture type Client-Server on LAN at 100 Mbit/s, where all functions of acquisition and data handling are concentrated on the Server, whilst Clients operate data presentation. In addition, at other selected users sites other Clients are installed which can visualize the acquired data and also interrogate directly the meteo stations .

Mappa dei sensori di Precipitazione

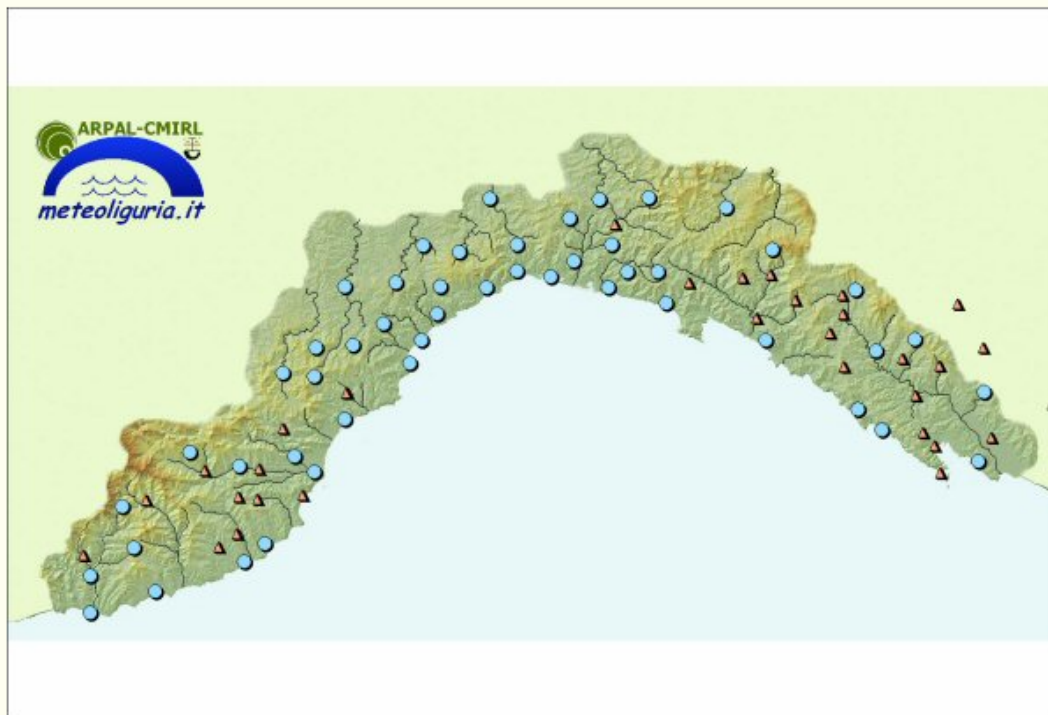


Elaborazioni e grafica: Andrea Cavallo e Federico Pedemonte

I grafici e le mappe pubblicati in questa sezione del sito sono ottenuti da dati acquisiti in tempo reale e non sottoposti a validazione, pertanto ARPAL non è responsabile per danni o problemi derivanti dal loro utilizzo improprio.

[Serve un aiuto per l'interpretazione?](#)

Mappa dei sensori di Temperatura



Elaborazioni e grafica: [Andrea Cavallo](#) e [Federico Pedemonte](#)

I grafici e le mappe pubblicati in questa sezione del sito sono ottenuti da dati acquisiti in tempo reale e non sottoposti a validazione, pertanto ARPAL non è responsabile per danni o problemi derivanti dal loro utilizzo improprio.

[Serve un aiuto per l'interpretazione?](#)

Mappa dei sensori di Umidita' relativa



Elaborazioni e grafica: [Andrea Cavallo](#) e [Federico Pedemonte](#)

I grafici e le mappe pubblicati in questa sezione del sito sono ottenuti da dati acquisiti in tempo reale e non sottoposti a validazione, pertanto ARPAL non è responsabile per danni o problemi derivanti dal loro utilizzo improprio.

[Serve un aiuto per l'interpretazione?](#)

Mappa dei sensori di Radiazione solare



Elaborazioni e grafica: Andrea Cavallo e Federico Pedemonte

I grafici e le mappe pubblicati in questa sezione del sito sono ottenuti da dati acquisiti in tempo reale e non sottoposti a validazione, pertanto ARPAL non è responsabile per danni o problemi derivanti dal loro utilizzo improprio.

[Serve un aiuto per l'interpretazione?](#)



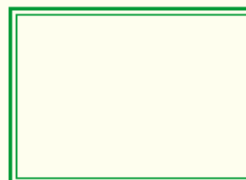
[Previsioni](#)
Mappe da modelli

[Satellite](#)
Dati osservati

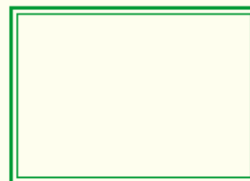
[Links meteo](#)
Servizi agli utenti

[Eventi meteo](#)
News

Il Centro Meteo-Idrologico della Regione Liguria fornisce a pagamento, oltre i prodotti presenti sul sito, previsioni meteorologiche e meteomarine (via Fax e via SMS), dati misurati ed analisi climatologiche per la Liguria (via Fax e servizio postale)



[Previsioni via Fax&SMS](#)



	1	2	3	5
1	1	3		5
2	2	6		11
3	3	1		9
4	4	1		12
5	5	1		15
6	1	18		4

[Fornitura dati](#)

ARPAL-CMIRL V.le Brigate Partigiane 2 Genova Italy

Sito ottimizzato 800x600