



# *Regione Autonoma Friuli - Venezia Giulia*

**CENTRAL ADMINISTRATION OF AGRICULTURAL  
FOREST AND NATURAL RESOURCES**

**REGIONAL PHYTOSANITARY SERVICE**

**DOCUMENTATION, IDENTITY AND  
PHYTOSANITARY CHECKS AT  
EUROPEAN COMMUNITY ENTER POINTS**



# IMPORTS

## MAIN LAWS AND REGULATIONS

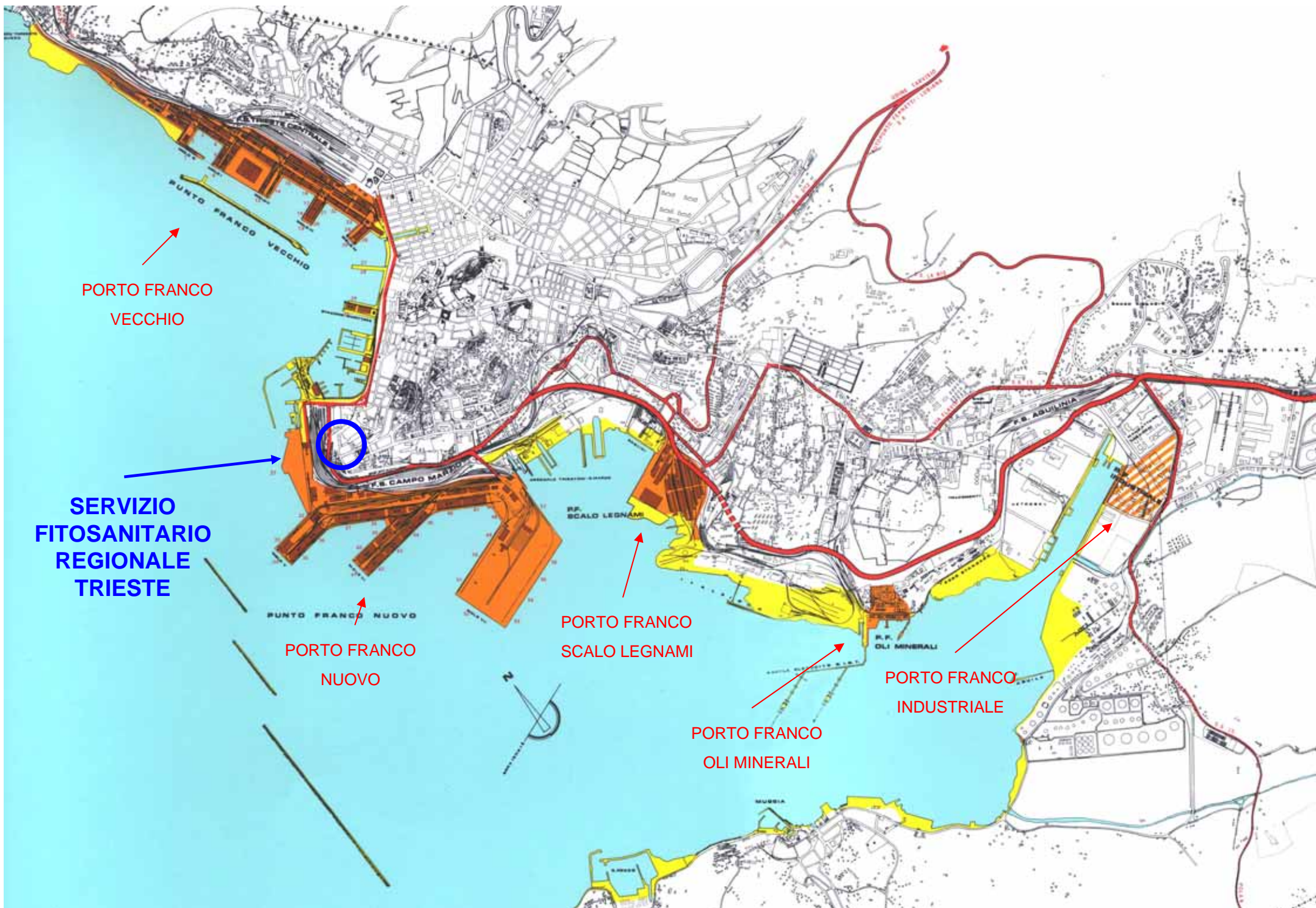
- **Directive 2000/29/CE of 8 May 2000, and subsequent amendments and additions**, on “Protective measures against the introduction of organisms harmful to plants and plant products into the Community and against their spread within the Community”.
- **D.M. 31.01.1996, and subsequent amendments and additions (in Italy)**: “Protection measures against the introduction into EC of organisms harmful to plants and plant products”.
- **EC VADEMECUM** concerning: “Harmonized inspection procedures for the importation of consignments coming from third countries”.

# EUROPEAN COMMUNITY ENTRY POINTS IN FRIULI VENEZIA GIULIA (AT 30/04/2004).

- Airport customs:** Ronchi dei Legionari (GO)
- Port customs:** Trieste
- Railway customs:** Gorizia, Villa Opicina (TS)
- Road customs:** Gorizia Sant' Andrea, Trieste Ferneti,  
Trieste Pese, Trieste Rabuiese
- Additional entry points for importing wood:
- Port customs:** Monfalcone (GO), Porto Nogaro (UD).







PORTO FRANCO  
VECCHIO

SERVIZIO  
FITOSANITARIO  
REGIONALE  
TRIESTE

PORTO FRANCO  
NUOVO

PORTO FRANCO  
SCALO LEGNAMI

PORTO FRANCO  
OLI MINERALI

PORTO FRANCO  
INDUSTRIALE

PUNTO FRANCO  
VECCHIO

PUNTO FRANCO  
NUOVO

P.S. CAMPO MARTE

R.F. SCALO LEGNAMI

R.F. OLI MINERALI

P.S. ABU LINIA





# PROCEDURES GOVERNING PHITOSANITARY CHECKS

## Verifications:

- Plant, plant products, the introduction of which shall be prohibited in all member countries or in protected zones (Annex III);
- documentary checks;
- identity checks;
- inspection and verified absence of harmful organisms, listed in Annex I and II of the Directive;
- respect of requirements in Annex IV of the Directive.

# PHYTOSANITARY CERTIFICATION FOR IMPORTS

## Documentary checks:

- ✓ Phytosanitary certification from origin goods country, compulsory for plants or plant products in the Annex V
- ✓ Other documents useful to identify goods:

SHIPPING CARD  
CONSIGNMENT NOTE  
CARNET  
INVOICE  
BILL OF LADING  
CERTIFICATE OF ORIGIN  
DOCUMENTATION INDICATING THE START OF STORAGE

## Identity checks

- ✓ Check the correspondence between the plants or plant products declared in the documents and what seen during the inspection.

Whenever harmful organisms that need to be quarantined are found,  
one of the following measures must be taken:

- appropriate treatment
- separation of the infected and infested products
- a period of quarantine can be imposed, until the official results of the examination or tests are available
- refusal of goods or authorisation to send the goods to a destination outside the European Union
- destruction of the goods

# **PHYTOSANITARY MEASURES FOR IMPORTING CERTAIN PLANTS OR PLANT PRODUCTS**

## **Importing potatoes for eating from Egypt**

**Decision by the Commission on 22/12/2003** – that allows member countries to adopt “Emergency measures against the dissemination of *Pseudomonas solanacearum* (Smith) Smith as regards to Egypt”.

Transposed in Italy by **D.M. 22/01/2004**.

According to the Directive the potatoes must be exported from areas declared “Free zones from *Pseudomonas solanacearum*”

**In Egypt potatoes must be:**

- ➡ officially inspected in the field, during the growing season;
- ➡ taken to officially approved packing stations;
- ➡ prior to be transported, they must be visually inspected and laboratory analyses must be done to test for *Pseudomonas solanacearum*.

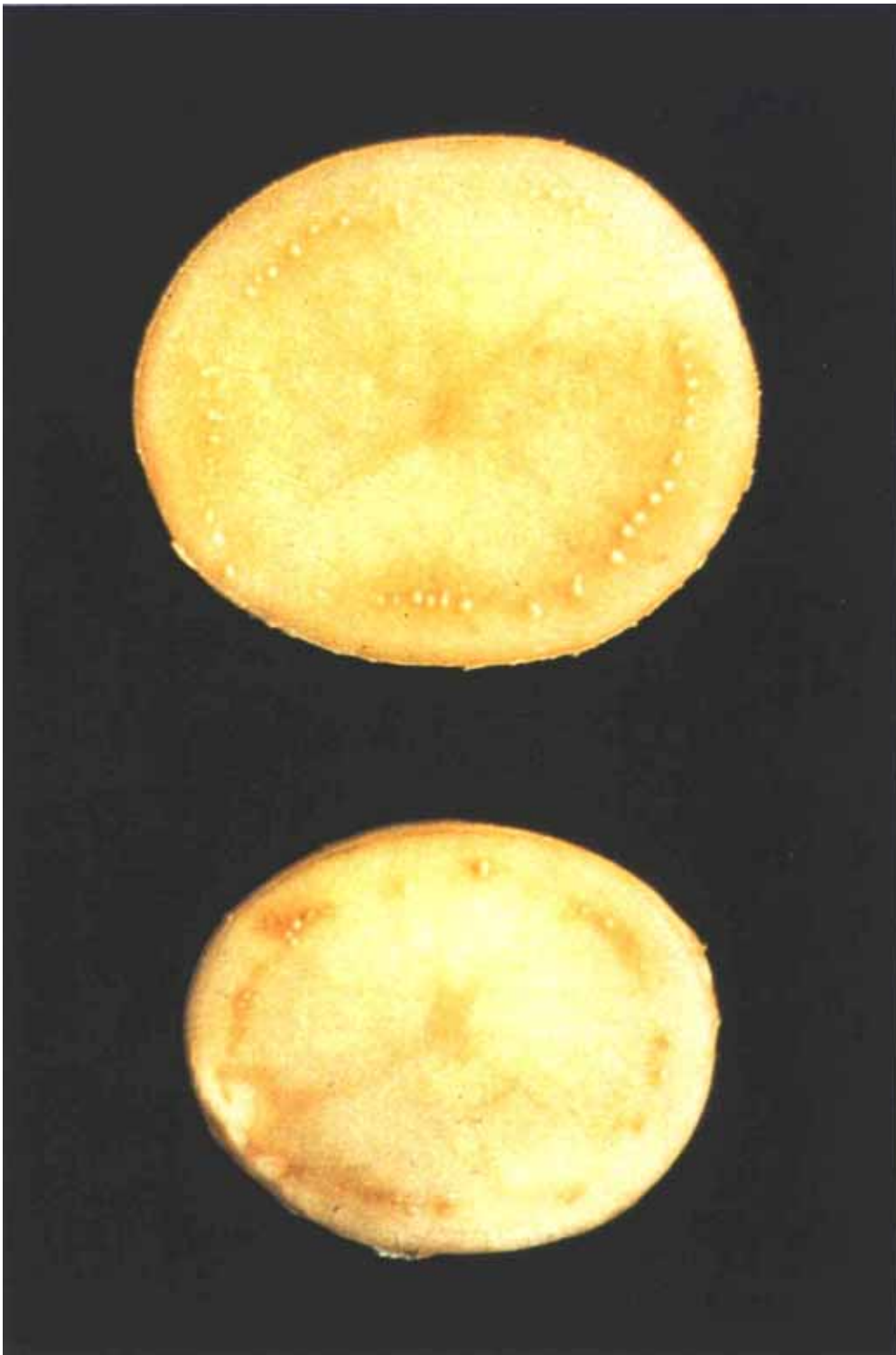
**When the potatoes enter the Community, the following specific measures must be undertaken:**

- ➡ verify that the Egyptian exportes are in the official list of authorized exporters;
- ➡ verify that the consignments come from basins (areas) declared “free from *Pseudomonas solanacearum*” in the official list s supplied by the European Community;
- ➡ organize for each consignment in the importing season a sampling scheme with visual controls on 200 potatoes every 25 tonnes per lot of the shipment, as well as laboratory analiyses, from each basin in order to detect latent infections by *Pseudomonas solanacearum*.

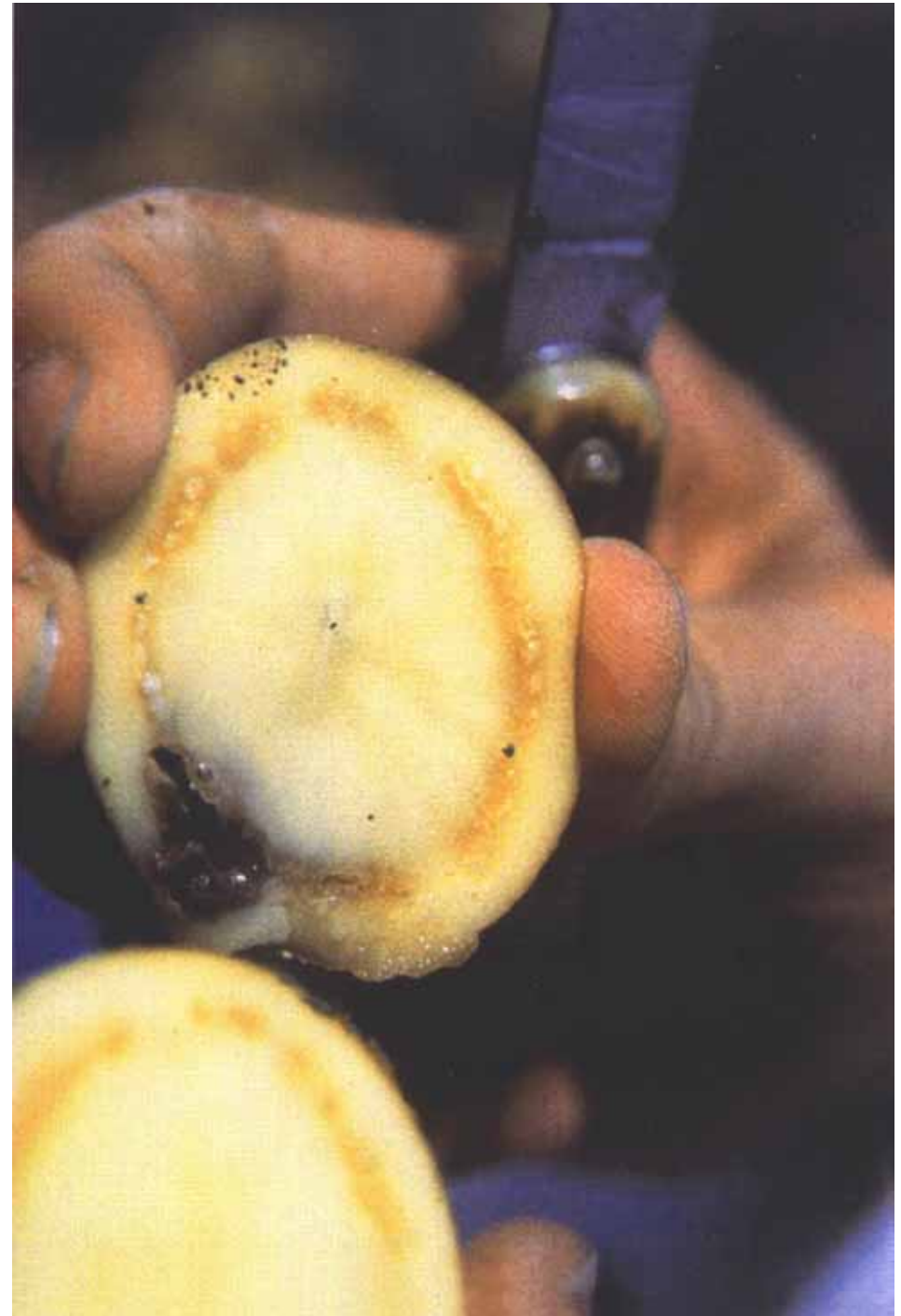
## **Specific rules for commercial traders introducing egyptian potatoes:**

- ➡ Notification to the relevant Phytosanitary Service about the location of the processing plants, which must be equipped with a procession cycle or a waste disposal system, including the water used for washing, so as to prevent the spread of *Pseudomonas solanacearum*.

*Pseudomonas solanacearum*  
or potato brown rot



*Pseudomonas solanacearum*  
or potato brown rot



# Importing citrus fruit from third Countries

**Directive 2000/29/CE of 8 may 2000**, and subsequent amendments and additions, on “Protective measures against the introduction of organisms harmful to plants and plant products into the Community and against their spread within the Community”.

Importing citrus fruit involves the risk of introduction of the following harmful organisms:

## FRUIT FLIES of the genera:

Anastrepha, Ceratitis, Bactrocera, Dacus, Rhagoletis

## COCHINEALES belonging to the families:

Pseudococidae, Coccidae, Diaspididae, Orthezidae,

## THRIPS of the genus

Schirtothrips

# **Importing wheat grain from the U.S.A., MESSICO, AFGHANISTAN, INDIA, IRAQ, NEPAL, PAKISTAN, SUD AFRICA**

**Directive 2000/29/CE of 8 may 2000, and subsequent amendments and additions,** on “Protective measures against the introduction of organisms harmful to plants and plant products into the Community and against their spread within the Community”

transposed in Italy by **D.M. 31.01.1996, and subsequent amendments and additions;**

**Directive 2002/36/CE of 29 april 2002.**

**D.M. 19.02.1997:** amendments to the annexes of D.M. 31.01.1996.

**Ministerial technical notes n. 30814 of 07/05/2001 and n. 31634 of 08/07/2002.**

The greatest phytosanitary risk related to the introduction of wheat from the above mentioned countries is due to the presence in such regions of a pathogenic fungus: *Tilletia indica*.

This is a parasite that needs to be quarantined and causes bunt or partial bunt (Karnal bunt).

Infection caused by *Tilletia indica* on ear of wheat and on grains.



# **Importing wood packing from Canada, Cina, Giappone, U.S.A.**

**Directive 2000/29/CE of 8/5/2000**, and subsequent amendments and additions, on “Protective measures against the introduction of organisms harmful to plants and plant products into the Community and against their spread within the Community”.

**Decision by the European Commission 2001/219/CE of 12/3/2001**, on emergency measures concerning wood packing material completely or partially of untreated pine wood from Canada, Cina, Giappone and U.S.A.

transposed in Italy by **D.M. 21/8/2001**.

**D.M. 15/2/2000**, concerning emergency measures to prevent the spread of *Anoplophora glabripennis* (Motschulsky) from Cina (not including Hong Kong).

**Ministerial technical notes n.32284 of november 2001 and n. 30994 of may 2002.**



Pine plant in Japan attacked  
by the nematode *B.*  
*xylophilus*  
(from: Kiyohara, g.c.)

*Adults of Monochamus galloprovincialis ssp.*  
*galloprovincialis,*  
*coleopter cerambicidae carrier of Bursaphelenchus*  
*mucronatus e*  
*B. xylophilus. (from Marinari Palmizano et al.*  
*1992)*



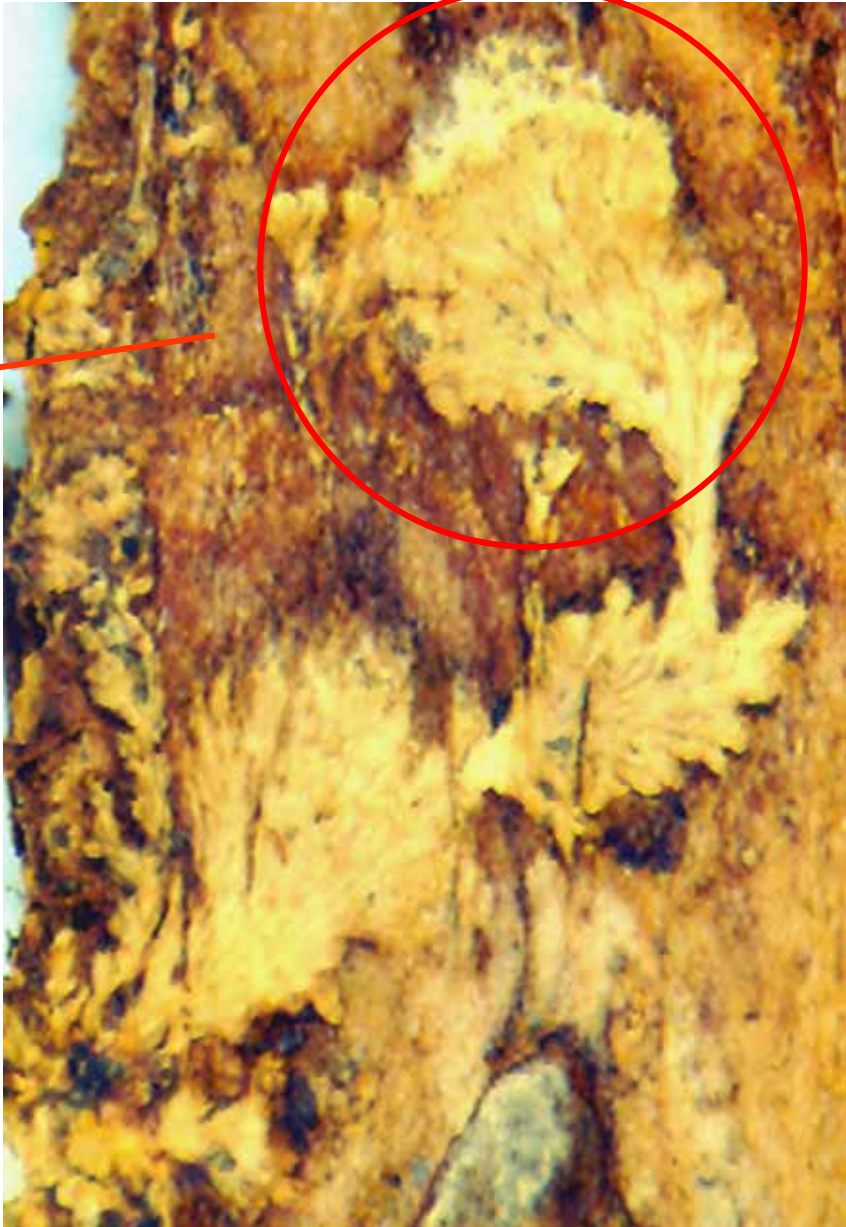
# Imported chestnut wood from third Countries

**Directive 2000/29/CE of 8 may 2000**, and subsequent amendments and additions, on “Protective measures against the introduction of organisms harmful to plants and plant products into the Community and against their spread within the Community”

transposed in Italy by **D.M. 31.01.1996**, and subsequent amendments and additions.

In the past, some consignments of debarked chestnuts trunks were founded to be infected with *Cryphonectria parasitica* (Murril), a fungus causing a disease in chestnut trees known as “cortical cancer”. To ensure there is no *Cryphonectria parasitica* in imported wood, trunks must be completely “bark free”, not only “debarked”.

Infection caused by *Cryphonectria parasitica* on chestnut wood



# RE-SHIPMENT CERTIFICATION

A sizeable portion of the activity of free Port of Trieste involves buying, storing and reshiping plant products from third Countries. This is done by traders and often the goods are ultimately destined for other third countries.

Phytosanitary office in Trieste often uses Phytosanitary Re-shipment Certification for:

- dried goods destined for industries or consumption
- goods stored or in transit in the free carriage areas

with or without phytosanitary certificate from origine country.

The main products in transit at the Trieste Port are

- RAW COFFEE BEANS
- RAW COTTON
- TIMBER
- GRAIN

