



PHYTOSANITARY INSPECTION PROCEDURES

AT IMPORT IN LUKA KOPER

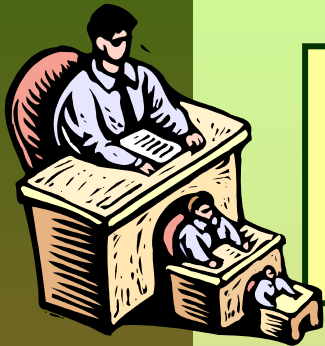


Helena HRVATIN
MAFF - Inspectorate of RS for Agriculture, Forestry and Food
PHYTOSANITARY INSPECTION SERVICE
SLOVENIA

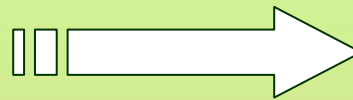
CEI Conference
Portorož, 6 - 7 May 2004



Phytosanitary Inspection Service in Luka Koper



LJUBLJANA
Headquarters



Unit KOPER
4 PHSY inspectors

WORKING HOURS

Mon – Fri 8^h – 16^h

Sat – Sun IF NEEDED
(pre-arrival announcement)





Phytosanitary Inspection Procedure

Inspector should be acquainted:

- ❑ **Phytosanitary legislation requirements**
- ❑ **Commodity characteristics**
- ❑ **Pest range (biology, host plants, geographical distribution, means of movement)**
- ❑ **Phytosanitary risk (plant/pest/origin/time of import)**
- ❑ **Detection and identification (symptoms, morphology)**
- ❑ **Phytosanitary measures**





Inspectors“TOOLS”

- 1. Phytosanitary Inspection Manual**
- 2. EPPO databases:**
 - ❖ **PQR (plant/pest information) , PRS (phytosanitary legislation) programs**

Current commodity

Current host: **CIDSI****Citrus sinensis****Guignardia citricarpa****PQR**

EPPO's plant quarantine data retrieval system.

The PQR system holds information on pests, on their host plants, on the plant commodities liable to carry them in international trade and on their geographical distribution.

Current country: **ZA****South Africa**

GUIGCI: Status in ZA

Status of *Guignardia citricarpa* in South Africa

Current pest status evaluated by EPPO on the basis of inform
Present, limited distribution

From CABI Disease map 053: **Present, no details**

Cited in Quarantine Pests for Europe as: **Present, no details**

From FAO: **Present, limited distribution**

From USDA: **Present, limited distribution**

Available lists

CIDSI: Major Host Pests

GUIGCI: DistributionCountries where *Guignardia citricarpa* occurs**Asia**

Bhutan	Present, no details
China	Present, limited distribution
Indonesia	Present, no details
Philippines	Present, no details
Taiwan	Present, no details

Africa

Kenya	Present, no details
Mozambique	Present, no details
South Africa	Present, limited distribution
Zambia	Present, no details
Zimbabwe	Present, no details



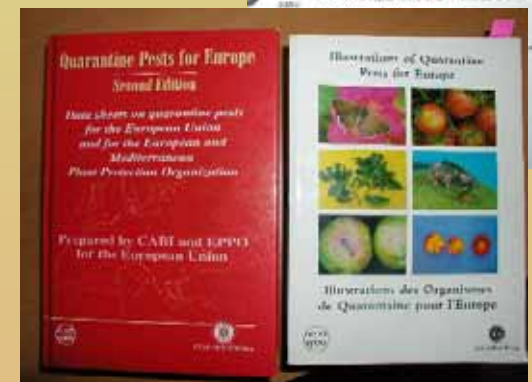
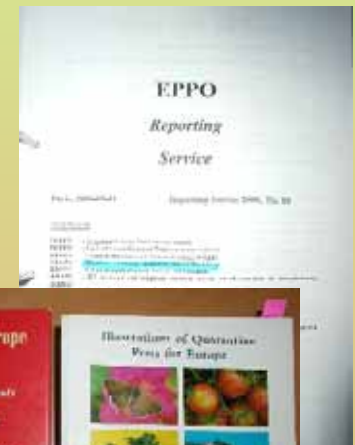
Inspectors “TOOLS”

2. EPPO databases:

- ❖ Reporting Service with information on interceptions
- ❖ Alert list (new possible risks, early warning)
- ❖ Books, Publications, Standards

3. Other professional publications

4. Regular training





Phytosanitary Inspection Manual

- **Uniform collection of instruction - systematically arranged, available in one place**
- **Carry out inspection in proper way - regardless the place of inspection:**
 - uniform,
 - effective,
 - rapid,
 - simple,
 - in compliance with legislation and international requirements
- **Requirement of Dir. 98/22/EC on minimum conditions - written, up-to-date national inspection guidelines**





Phytosanitary Inspection Manual - WHAT?

Any

- **useful,**
- **short,**
- **clear**

INFORMATION



needed in inspector's daily work

to facilitate a *decision making process.*



Phytosanitary Inspection Manual- Framework

Section A: GENERAL PROCEDURES

Section B: INSPECTION PROCEDURES

Section C:

- C I: Annual plan for monitoring and surveys
- C II: Harmful organisms database (Technical instructions)





PHSY Inspection Manual - Framework

Section B

INSPECTION PROCEDURES

- ❖ ***Import***
- ❖ ***Export***
- ❖ ***Reexport***
- ❖ ***Plant Passport System***
- ❖ ***Potatoes***





PHSY Inspection Manual - Framework

Section C

- C II: *Harmful organisms database -
50 HO from Annex I, Annex II, EPPO Alert List*

❖ *Technical instructions*

- *Biology, symptoms*
- *Host plants*
- *Time and place of inspection*
- *Inspection procedure*
- *Sampling*
- *Measures*

❖ *Photo material*

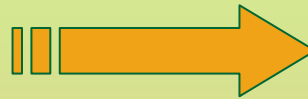




GENERAL Inspection Procedures - **IMPORT**

1. Documentary check

**Importer
(agency)**



APPLICATION
+ original PC
+ other documents

- ❖ **plant commodities to be inspected (Annex V.B.)**
- ❖ **import prohibited (Annex III.)**
- ❖ **special requirements (Annex IV.)**

TRANSMAR

KOPER - KAPODISTRIA - SLOVENIJA



Vojkova cesta 309 - P.O.B. 188
8001 Koper
Telefon / telefonska številka: 001 803 04 00
faks: 31264 TRANSMAR SI
E-mail: transmar@transmar.si
Internet: http://www.transmar.si

REPUBLIKA SLOVENIJA
Ministrstvo za kmetijstvo, gozdarstvo in prehrano
Inšpektorat Republike Slovenije za kmetijstvo,
gozdarstvo in hrano

Fitosanitarna inšpekcija
OE: KOPER

Št. prijave: _____
(uporabi številni oznaka)

REFERENT: NOVAK ORNELA
TEL.: 05-6630-440

POS. 710-4000321/013

Datum: 10.03.2004

Zadeva: PRIJAVA POŠILJKE RASTLIN, RASTLINSKIH PROIZVODOV IN NADZOROVANIH
PREDMETOV, GOZDNEGA REPRODUKCIJSKEGA MATERIALA OZIROMA
SEMENSKEGA MATERIALA KMETIJSKIH RASTLIN ZA INŠPEKCIJSKI PREGLED
PRI TVOŽU

- Priložna inšpekcijska pregleda spodaj naštetim pošiljke:
- malih, neslišnih proizvodov in izdelavanih proizvodov
 - gozdnega reprodukcijskega materiala
 - semenskega materiala kmetijskih rastlin

1. Izvoznik pošiljke: **TRANSMAR KOPER ZA / CAPESPAN WIEN (PRUTEAPAK KOPER)**
(Pisna inšpekcija / faks, e-pošta in telefon)

2. Nepravilna registrirana št. št. izvoznika:

3. Vrednina reg. št. št. izvoznika: **LADJA: H CAPE SANTIAGO**

4. Izvoznik pošiljke: **CAPESPAN (PTY) PLC**
PARC DU CAP, MIRPEL ROAD 7530
BELLVILLE, JUŽNA AFRIKA
(Pisna inšpekcija / faks, e-pošta in telefon)

5. Država izvora: **JUŽNA AFRIKA** 6. Država pošiljke: **JUŽNA AFRIKA**

7. Številka fitosanitarnega spričevala: **PGT 0133777**
Podatki o pošiljki vrsta, količina, ime, vrsta, pakiranje:
3.280 KART. - 44.280 KG BITO/41 KG NITO - HRUŠKE (PYRUS COMMUNIS)
V KONTEJNERJIH CRLU 111023-5 IN MWCD 602374-0

8. Bruto pakiranje: **3.280 KART.**, skupna količina (kg, t, št. k): **41.000 - KG NETO**
Za pošiljke gozdnega reprodukcijskega materiala ali semenskega materiala kmetijskih rastlin
navajamo podrobnejše podatke v prilogi.

8. Podpisani izdajatelj, da so podatki navedeni v prijavi, točni.

Kraj in datum prijave: Koper, 10.03.2004

TRANSMAR
Podpis in pečat izdajatelja
KOPER - KAPODISTRIA
Izdajatelj



- Priloge:
- Podrobne št. posodi o pošiljki gozdnega reprodukcijskega materiala
 - Podrobne št. posodi o pošiljki semenskega materiala kmetijskih rastlin
 - Splošne listine: **CERTIF. ORIG. PGT 0133777**

B/L - 011821094

PGT0133777



REPUBLIC OF SOUTH AFRICA NATIONAL DEPARTMENT OF AGRICULTURE, FORESTRY AND FISHERIES PHYTOSANITARY CERTIFICATE PLANT PROTECTION DIVISION

To: **SLOVENIA**
1. DESCRIPTION OF COMMODITY
Name of applicant: **CAPESPAN (PTY) LTD**
PARC DU CAP, MIRPEL ROAD, 7530 BELLVILLE

Issued to: **TRANSMAR B.O.O.**
VOJKOVA ULICA 309, 8001 KOPER, SLOVENIA

Kind of commodity: **3.280 KART. PEARS**

Origin: **CAPE** Certificate No: **111023-5 / 602374-0**
Certificate No: **MWCD 602374-0 / CRLU 111023-5**

Country of origin: **REPUBLIC OF SOUTH AFRICA**
Destination: **EUROPEAN UNION** Port of destination: **KOPER**

Quantity: **3200 bins PEARS** **KG GROSS: 44280 KG**
KG NETT: 41000 KG

II. Additional Declaration: **PYRUS COMMUNIS**

The commodity is free from pests and diseases and is fit for export to the European Union. The commodity is free from pests and diseases and is fit for export to the European Union. The commodity is free from pests and diseases and is fit for export to the European Union.

III. ADDITIONAL DECLARATION

III. DISINFESTATION AND/OR DISINFECTION TREATMENT

Date: _____
Method: _____
Location: _____
Signature: _____



CAPE TOWN Name of authority: **L. van der Merwe**
Date: **09.03.2004** Signature: **[Signature]**



GENERAL Inspection Procedures - **IMPORT**

2. Identity check

❖ documents / commodity verification

- plant species
- quantity
- origin





GENERAL Inspection Procedures - **IMPORT**

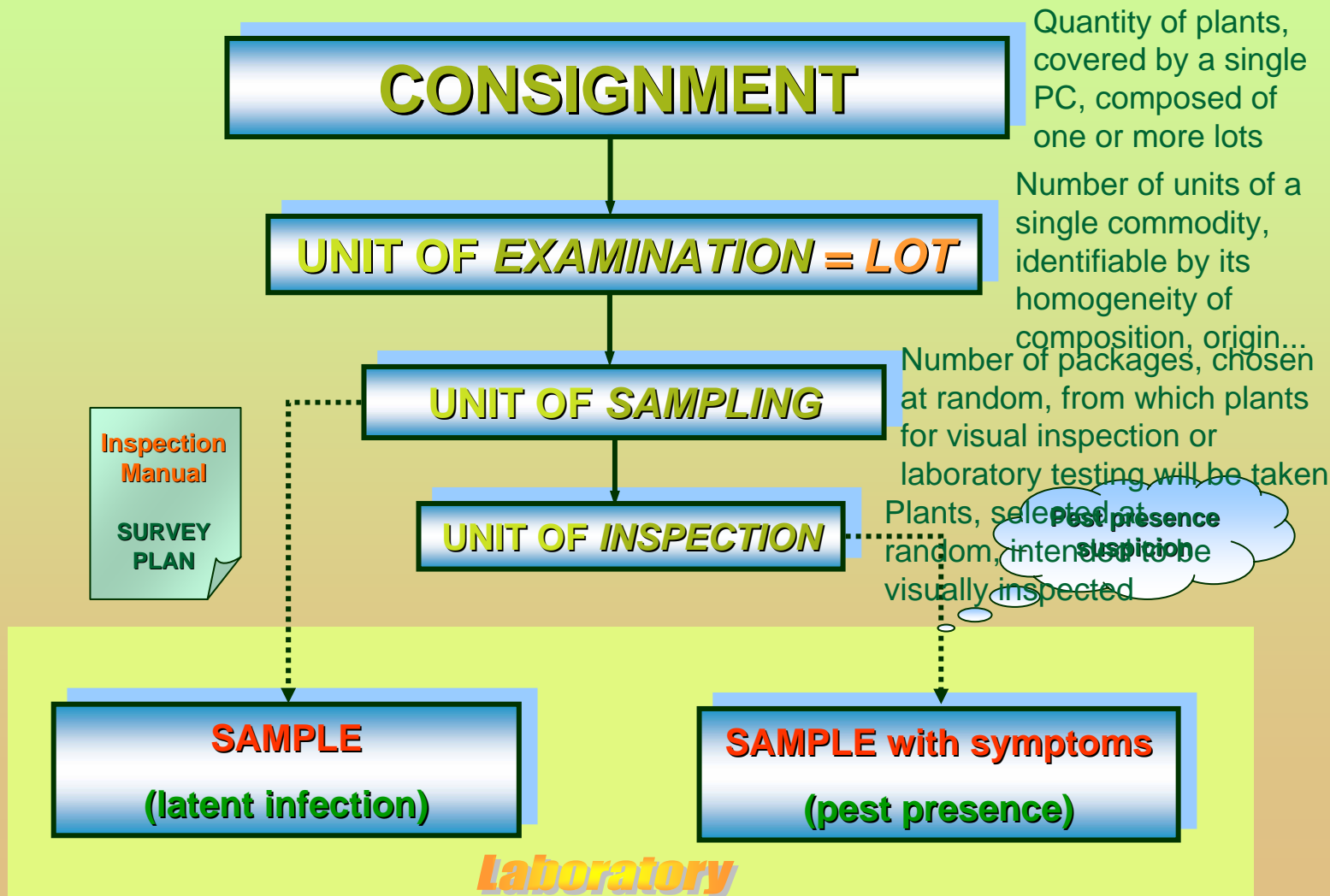
3. Plant health check

- ❖ plant health risk determination
- ❖ unit of inspection (**extent**)
- ❖ lists of harmful organisms and special phytosanitary requirements





Unit of inspection - **DETERMINATION**





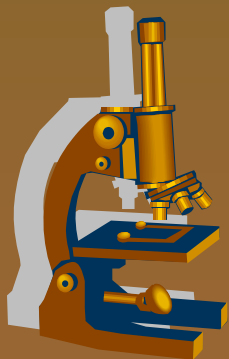
GENERAL Inspection Procedures - **IMPORT**

❖ **sampling**



Consignment is **DETAINED**
under PHSI and Customs Service control !

Presence of HO is **ALWAYS CONFIRMED** by laboratory !





*Inspection Procedures - **IMPORT***

- ***SPECIFIC Inspection Procedure***
 - **Plants for planting**
 - **Seeds**
 - **Cut flowers**
 - **Fruit**
 - **Potato**
 - **Soil and growing medium**
 - **Wood**



Commodities, inspected at import in Luka Koper

□ **Fruits**

- Citrus,
- Fortunella
- Malus,
- Pyrus
- Diospyros
- Mangifera
- Solanum melongena



□ **Potato tubers**



□ **Cut flowers**

- Dendranthema, Dianthus, Gypsophila, Solidago

□ **Wood**

- Coniferales





SPECIFIC Inspection Procedures - ***FRUIT***

PLANTS FOR PLANTING

SEEDS

FRUIT

- **definition**
- **import prohibition**
- **fruit which must be inspected and accompanied by PC**
- **extent of inspection**
- **plant health check procedure**
- **other relevant information**





SPECIFIC Inspection Procedures - ***FRUIT***

DEFINITION

- FRUIT** = fruit in botanical sense
- = fresh parts of plants, intended for consumption or processing (and not for planting)
- = but not dried, deep-frozen or otherwise conserved



SPECIFIC Inspection Procedures - ***FRUIT***

IMPORT PROHIBITION

FRUIT - NO import prohibition

But: Fruit of *Citrus, Fortunella, Poncirus* and their hybrids

- shall be free from peduncles and leaves,
- packaging shall bear an origin mark.

(Annex IV.A.I., 16.1)



SPECIFIC Inspection Procedures - ***FRUIT***

EXTENT OF INSPECTION - per lot

Number of package	Minimum No. of package to be inspected
--------------------------	---

≤ 100

2

100 – 500

3

501 – 1000

4

1001 – 2000

5

2001 – 3000

7

3001 – 4000

9

4001 – 5000

11

5001 – 6000

13

6001 – 7000

15

≥ 7000

15



SPECIFIC Inspection Procedures - **FRUIT**

PLANT HEALTH CHECK PROCEDURE



- ❖ **determination of lots and taking sample for visual inspection**



- ❖ **brief symptoms description of relevant HO**

- **Citrus, Fortunella, Poncirus**

- *fruit flies (Tephritidae)*
- *Scirtothrips aurantii, Scirtothrips citri*
- *Guignardia citricarpa,*
- *Cercospora angolensis*
- *Xanthomonas campestris (Citrus pathogenic strains)*





MEASURES

Inspection procedure when

- **harmful organisms is present**
- **one or more phytosanitary requirements are NOT fulfilled**

MEASURES:

- Import prohibition
- Destruction
- Reexport outside EU (respecting the requirement of the importing country)
- Treatment (chemical, temperature treatment)



Conclusion of inspection procedure

Document marking

1. IMPORT PROHIBITED

- PC marked with red triangle stamp
- Documents marked with stamp **IMPORT NOT ALLOWED**



2. IMPORT ALLOWED

- Documents marked with stamp **IMPORT ALLOWED**





Inspectors equipment

visual inspection is performed on the
inspection table
in place with
sufficient light





Inspectors equipment



**potato
inspection table**

**knife
magnifying glass
sampling kit**





Inspectors equipment

laboratory
at BIP Luka Koper





Phytosanitary inspection facility in Luka Koper





CONCLUSION



**THANK YOU
FOR
YOUR ATTENTION**