

Trieste Port Authority

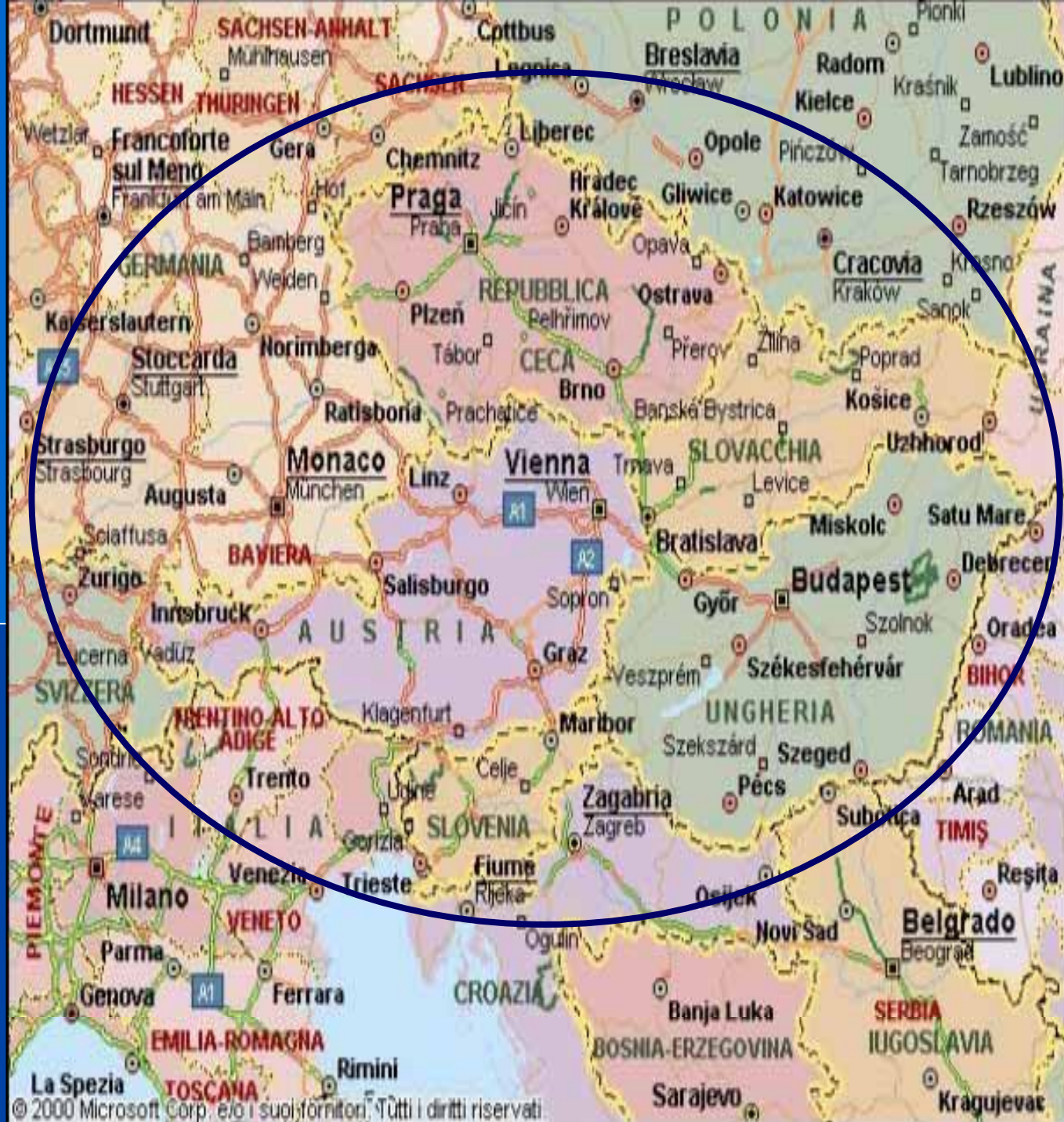
13° 47' 49" N
13° 47' 49" N

In the Heart of Europe
is the Soul of the economy

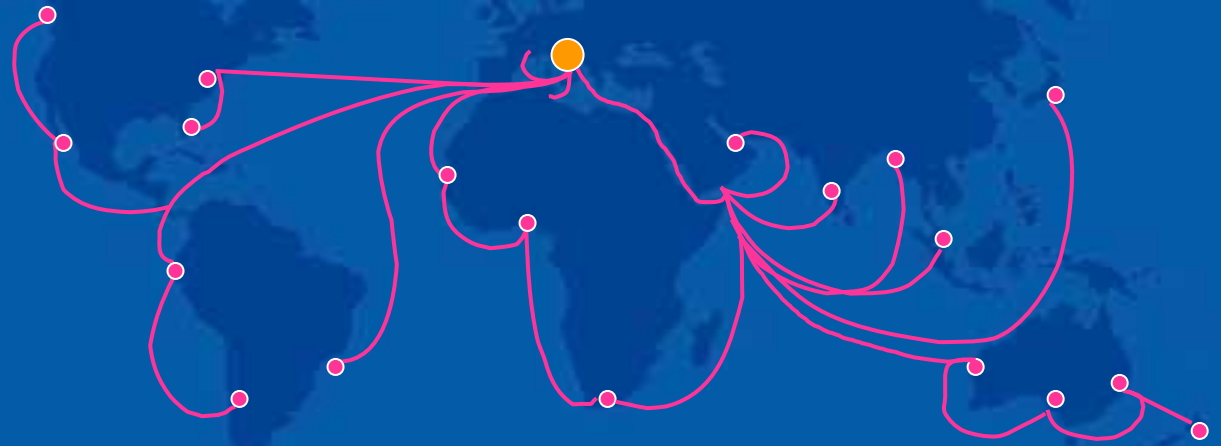


Reference market

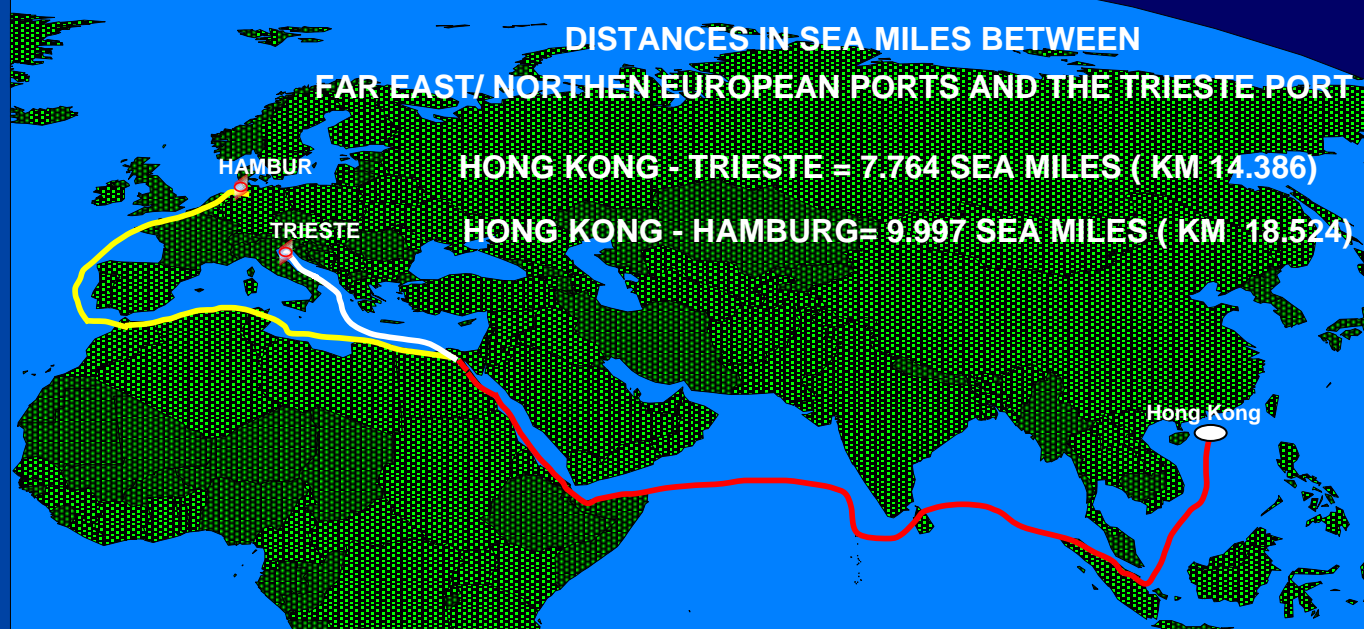
Trieste Port Authority



Trieste Port Authority



A junction linking different continents





Trieste Port Authority



An organized structure

- 1 - Livestock Terminal
- 2 - Adria Terminal
- 3 - Ro-Ro Ferry Ramp n.9
- 4 - Pier III Terminal
- 5 - Ro-Ro Ferry Ramp n.4
- 6 - Pier IV
- 7 - Passengers Terminal
- 8 - Ro-Ro Terminal - R. Traiana
- 9- Pier V -Fruit Terminal**

- 10 -Groceries and Textiles Terminal
- 11 -Pier VI Terminal
- 12 -Cereals Terminal
- 13 -Quay 71 - Warehouses 69/71
- 14 -Pier VII Container Terminal
- 15 -Ferry Terminal- Mooring 57
- 16 -San Marco Shipyard of Trieste
- 17 -Timber Terminal
- 18 -Steel Products Terminal

- 19 -SIOT Pipeline Terminal
- 20 -Oils Terminal
- 21 -Cements Terminal
- 22 -Manufactured products Terminal I
- 23 -Manufactured products Terminal II
- 24 -Chemicals Terminal
- 25 -Frozen products Terminal
- 26 -Refined Products Terminal

Trieste Port Authority



FREE PORT OF TRIESTE

- 1_ Old Free Zone
- 2_ New Free Zone
- 3_ Timber Terminal Free Zone
- 4_ Mineral Oils Free Zone
- 5_ Industrial Free Zone

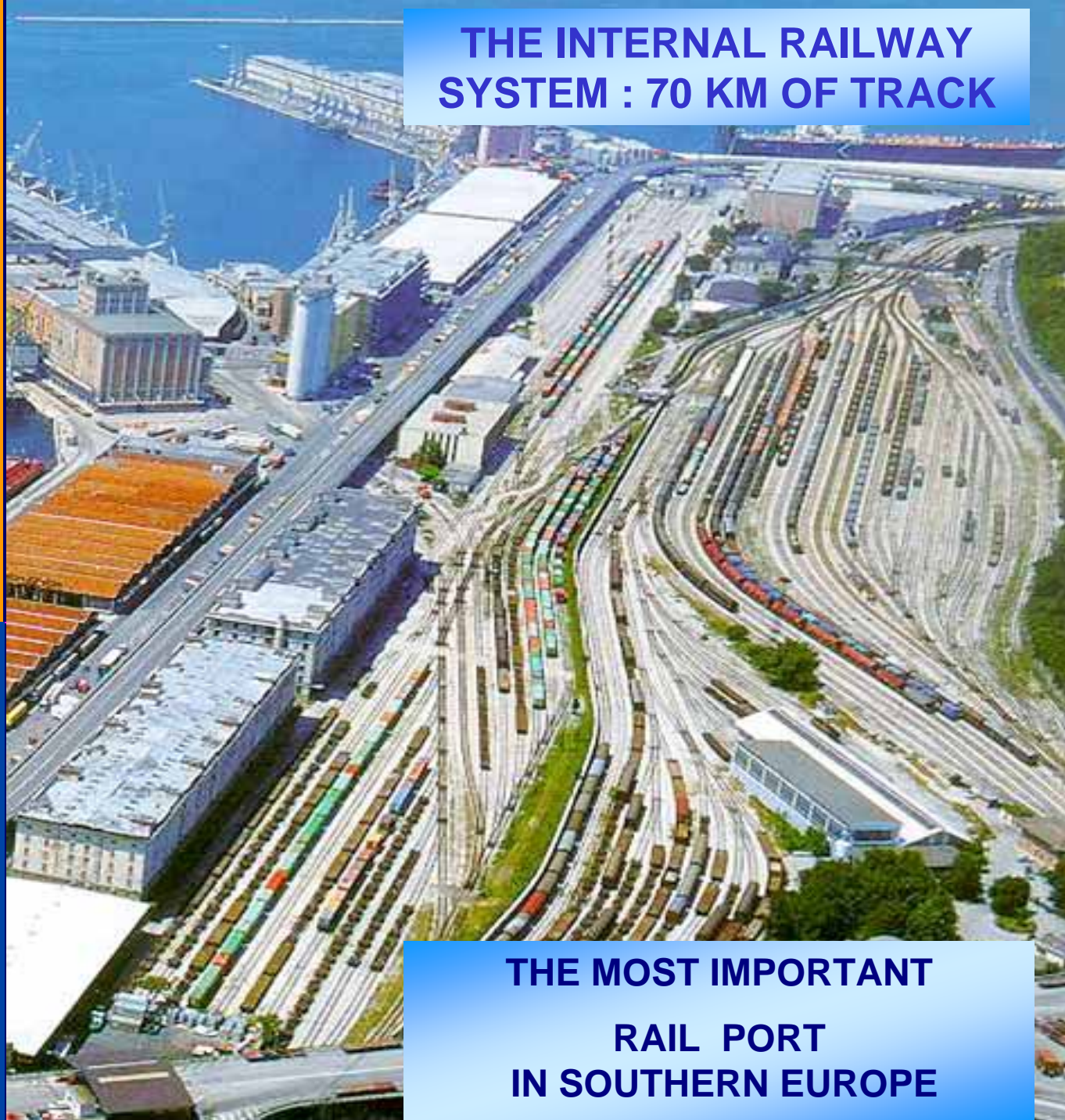


**THE INTERNAL RAILWAY
SYSTEM : 70 KM OF TRACK**

Trieste Port Authority



**THE MOST IMPORTANT
RAIL PORT
IN SOUTHERN EUROPE**



Trieste Port Authority



Railways connections



Trieste Port Authority



Trieste Container Terminal



Trieste Port Authority



Port of Trieste

- facilities -



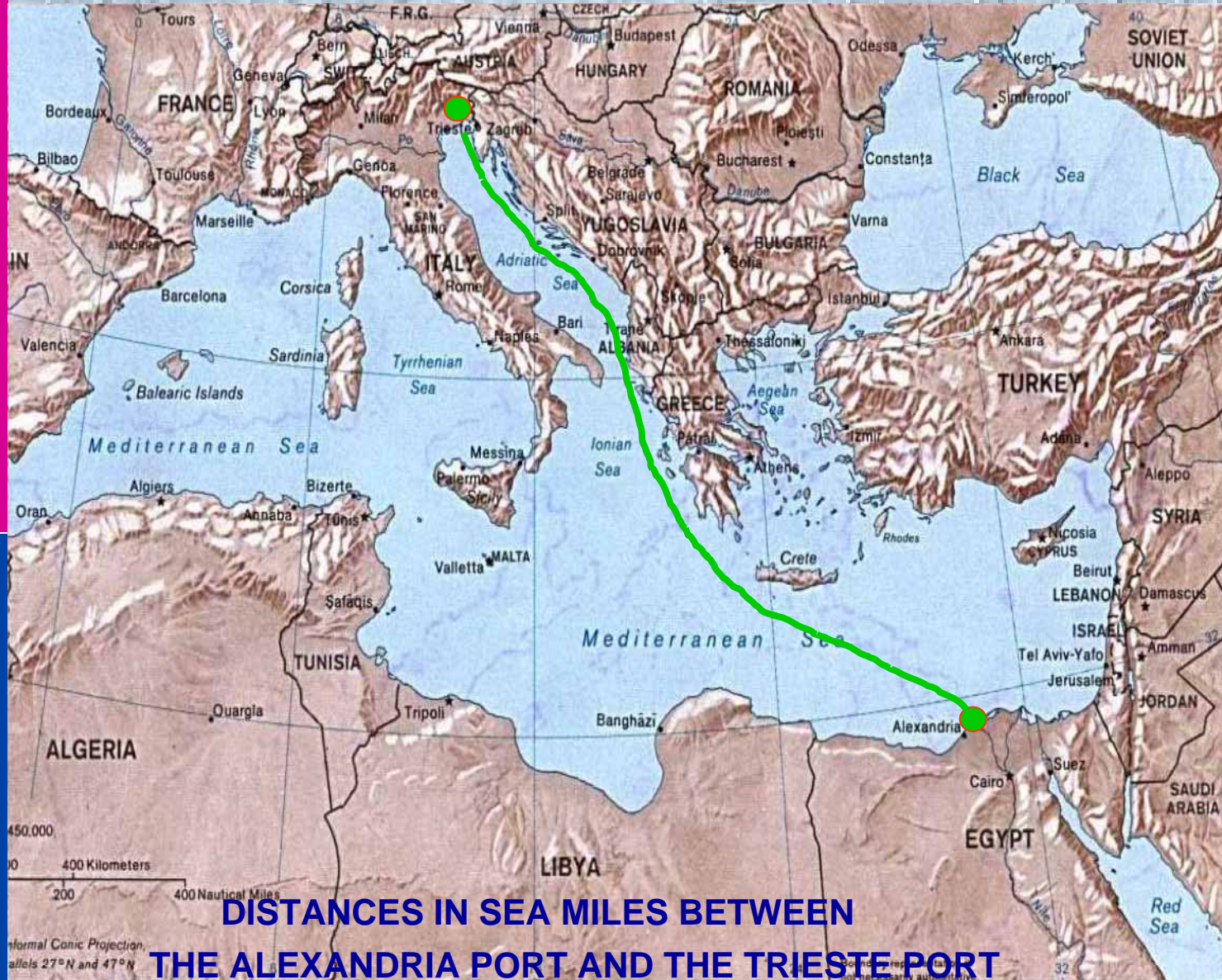
2,304,000 m² of port area, 1,765,000 of which are free zones, 925,000 m² are warehouses and storage areas, 500,000 of which are covered, 12 km of quays, 47 operative berths, depth up to 18 mt.

Agricultural Products
coming from Egypt
managed by

Terminal Frutta
Trieste

Year	Tons
2002	73,800
2003	65,000

The Alexandria - Trieste link



DISTANCES IN SEA MILES BETWEEN
THE ALEXANDRIA PORT AND THE TRIESTE PORT
ALEXANDRIA - TRIESTE = 1,196 SEA MILES

The Adriatic Green Corridor

