



The Czech Republic

The State Phytosanitary Administration

Pavla Zahradnikova
Division of quarantine



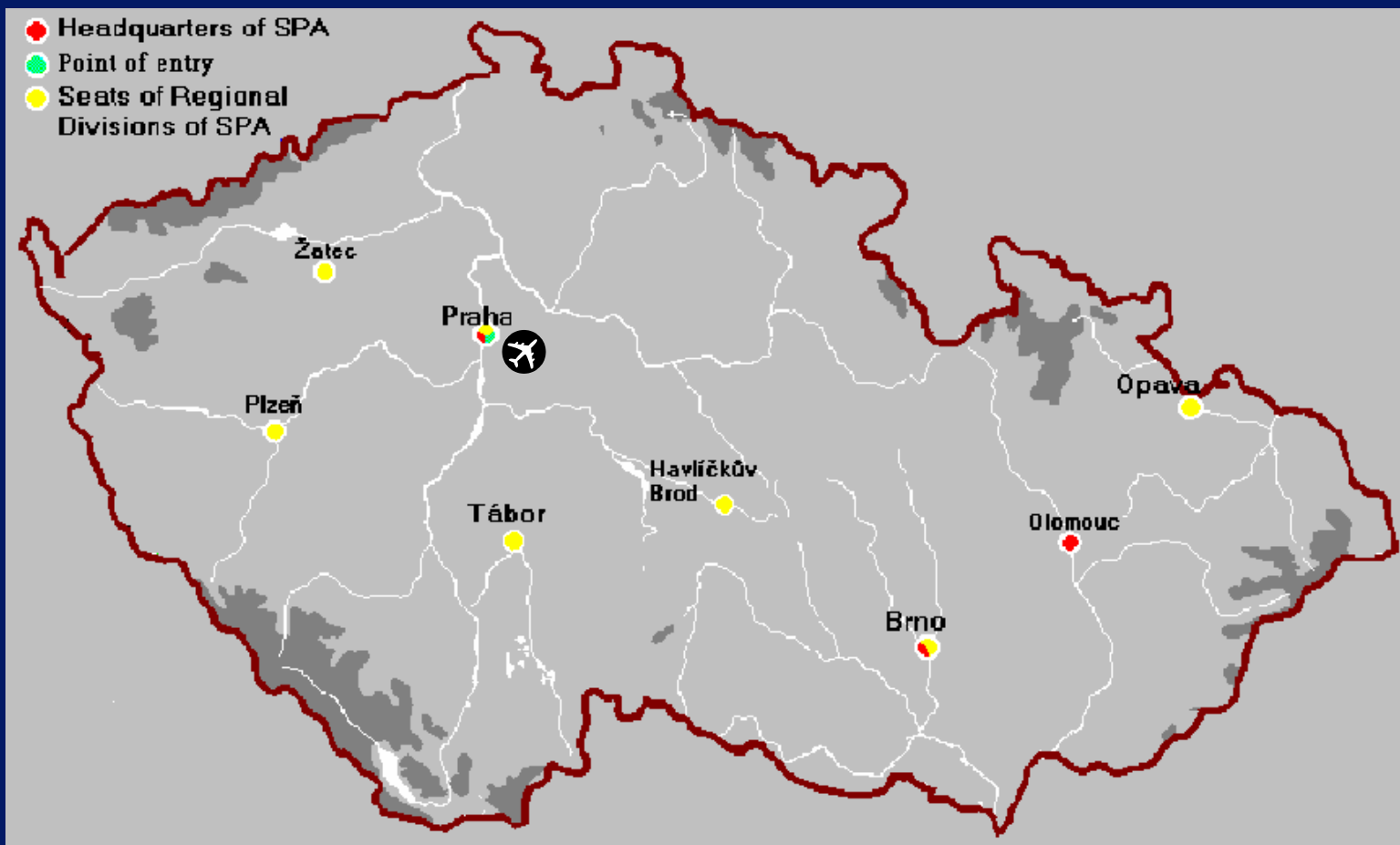
SPA

The State Phytosanitary Administration (SPA) is the official national phytosanitary authority in the Czech Republic.

SPA

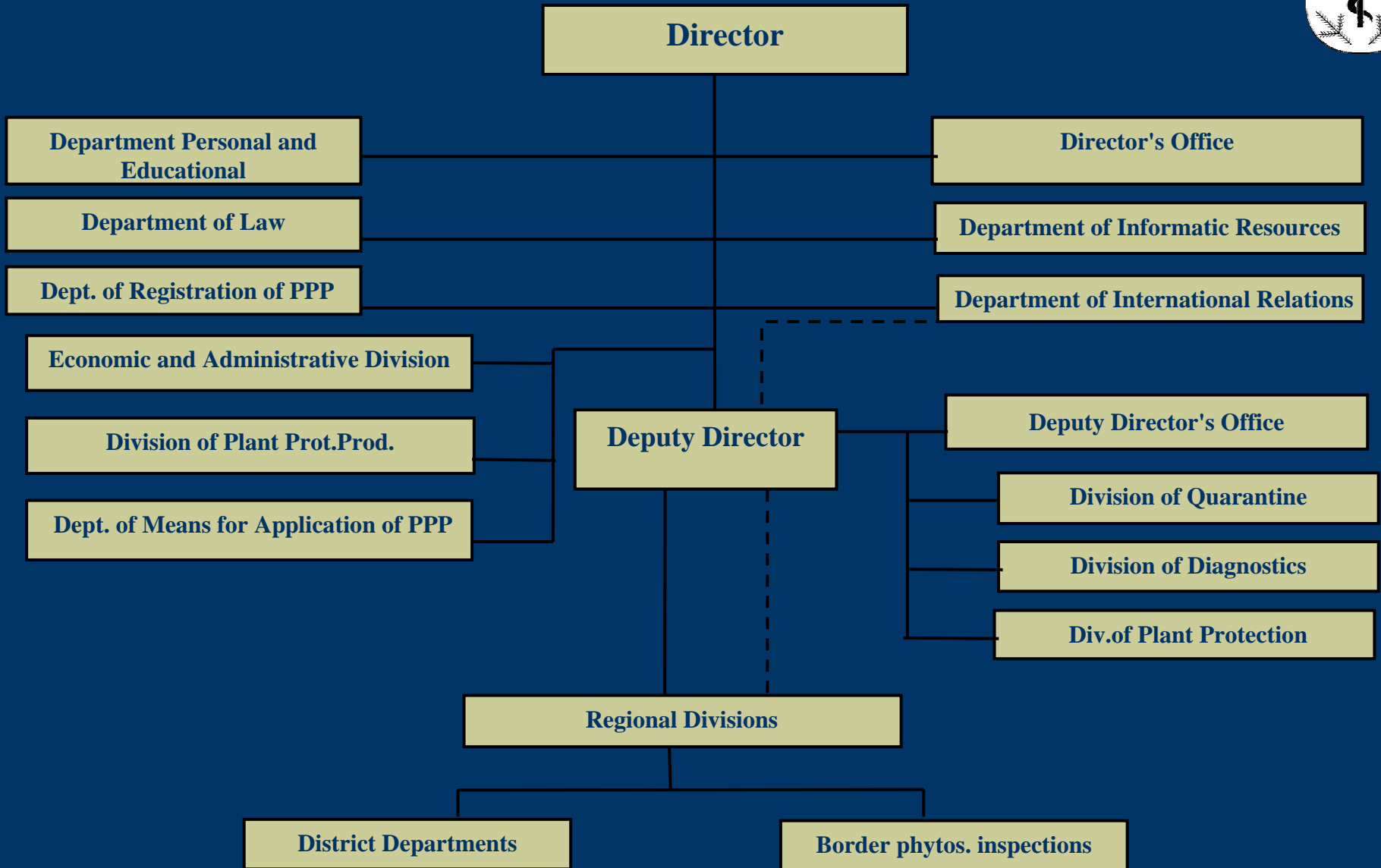
- ◆ Headquarters - 4 main technical divisions (seated in Praha, Brno and Olomouc)
- ◆ Regional Divisions (seated in Praha, Tabor, Plzen, Louny, Havlickuv Brod, Brno and Opava)
- ◆ District Departments (seated in 72 district towns)
- ◆ Phytosanitary Border Inspections (seated in 2 points of entry (including mail inspection post))

Main Seats of SPA





Organisation scheme of SPA



The main activities are concerning

- ◆ Protection against the introduction of organisms harmful to plants or plant products into the Czech Republic from other Member States of the European Union and from third countries, against their spread within the territory of the Czech Republic and against the introduction of these harmful organisms into the territory of other Member States of the European Union and third countries.

The main activities are concerning

- ◆ Systematic surveys of the occurrence of quarantine organisms on the territory of the Czech Republic and establishment of measures to prevent their spread and to isolate or eradicate their outbreaks.

The main activities are concerning

- ◆ Checks of the observation of quarantine regulations and provisions and of the observation of good plant protection practice especially during storage, distribution and application of plant protection products.

The main activities are concerning

- ◆ Systematic phytosanitary inspection of propagating material (nurseries of fruit trees, vines, forest trees, ornamentals etc.) and stored plant material.

The main activities are concerning

- ◆ Systematic observation, evaluation and documentation of the occurrence of important harmful organisms and disorders, on fields and in premises where plants or plant products are grown, stored or processed, working out forecasts, warnings and reports on their incidence, monitoring their resistance to pesticides, and surveying extent of chemical treatments of crop plants and level of usage of pesticides.

The main activities are concerning

- ◆ Diagnostics of diseases and pests of plants and plant products
- ◆ Registration of pesticides and other plant protection products, their testing and testing methods of plant protection, supervision of pesticide testing in the Czech Republic
- ◆ Testing of plant protection machinery and checking of its use

The main activities are concerning

- ◆ Expertise activities including establishment of phytosanitary legislation.
- ◆ Information and advisory activities .
- ◆ Collaboration with other authorities and institutions, international collaboration included .
- ◆ Official testing of potato cultivars resistance against potato cyst nematode and potato wart disease.

SPA staff

◆ HQ	168
◆ Regional Divisions	59
◆ District Departments	210
◆ BIPs	6
◆ TOTAL	443

Membership in international organisations

- ◆ WTO/SPS
- ◆ FAO/IPPC
- ◆ FAO governing bodies
- ◆ EPPO
- ◆ FAO-WHO/Codex Alimentarius
- ◆ OECD

Legislation

◆ Legislation:

- **Act 147/1996 Coll.** On Phytosanitary Care and Amendments of some Related Acts, as Amended by the Acts No. 409/2000 Coll. And No. 314/2001 Col., Act on Phytosanitary Care and Amendments of some Related Acts.
- **89/2002 Coll. Decree of the Ministry of Agriculture** on protection against the introduction of harmful organisms in the course of import, transit and export of plants and plant products and other objects, and against their spread within the territory of the Czech Republic and on systematic phytosanitary surveillance as amended by **Decree of the Ministry of Agriculture 355/2003 Coll. and Decree of the Ministry of Agriculture 195/2004 Coll.**
- Other decrees on protection of bees against plant protection products and registration of plant protection products.

Web pages

- ♦ Web pages of SPA: www.srs.cz



SPA

Phytosanitary import inspection
and related matters

Comparison

◆ Number of points of entry:

- Before the accession  33 BIP's
- After the accession  2 BIP's

◆ Volume of inspected trade

- Before the accession 35 000 imported consignments/year
- After the accession ? 500-1000 expected in the airport

Comparison

◆ Before the accession

- documentary check

• identity check → in point of entry

- plant health check

or

- documentary check

• identity check → in point of entry, → plant health
forwarded to check-place of

or

destination

- documentary check

• identity check → in approved
place of

- plant health check → destination

Comparison

◆ After the accession

- documentary check
- identity check
- plant health check



in point of entry

or

- documentary check
- identity check



in point of entry,
forwarded to

Points of entry

- ◆ International Airport Prague – Ruzyne.
- ◆ Customs post office Prague.
- ◆ *Places of destination approved for plant health checks.*
 - Number of consignments that will not be fully inspected in BIP's of the other member states ??

The Czech BIP's

Point of entry	Operating mode Running time	Contact
<u>International Airport Prague – Ruzyne</u>	discontinuous Mo-Fri: 07.00-15.30 on request 15.30-19.00 and on request Sat-Sun: 07.00-19.00	fi.praharuzyne@srs.cz +420 220 114 369 +420 724 039 912
<u>Customs post office Prague 120</u>	on request Mo-Fri: 07.00-15.30	obo.praha@srs.cz +420 220 808 602 +420 724 039 912

Intercepted consignments

Intercepted consignments, because of harmful organism, at the Airport Prague-Ruzyne in 2003.

Harmful organism	Comodity	Class of comodity	Measure
<i>Bactrocera dorsalis</i>	<i>Annona squamosa</i> L.	fruit	destroyed
<i>Bactrocera dorsalis</i>	<i>Annona squamosa</i> L.	fruit	destroyed
<i>Ditylenchus dipsaci</i>	<i>Medicago sativa</i>	seed	returned
<i>Bactrocera dorsalis</i>	<i>Annona squamosa</i> L.	fruit	destroyed

International airport Prague- Ruzyne -BIP



International airport Prague- Ruzyne - BIP



International airport Prague- Ruzyne – BIP



International airport Prague- Ruzyne - BIP



Procedure of import inspection

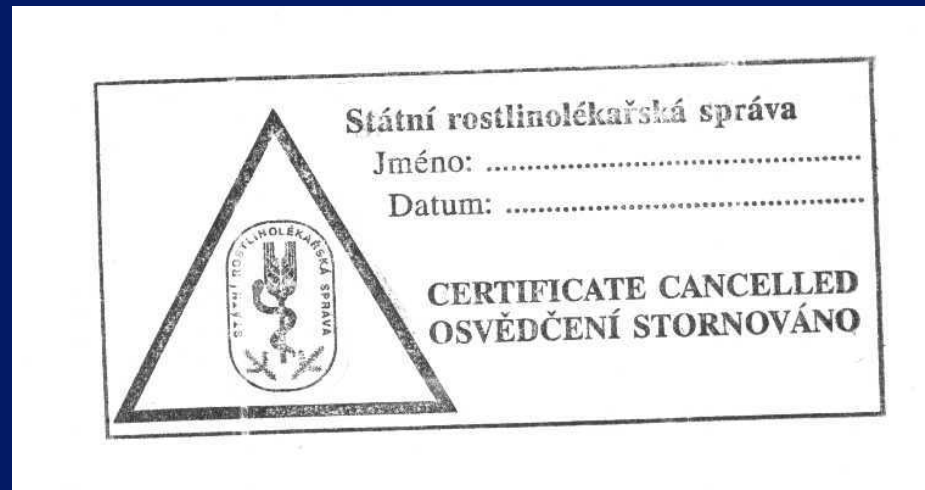
1. The importer or handler has to apply for inspection and importer must be registered in the Czech Republic – if not, registration could be done at the airport.
2. Documentary check - is always done in BIP.
3. Identity check - is always done in BIP.

Procedure of import inspection

4. Plant health check – normally is carried out in BIP, but consignment could be, on request of the importer, forwarded to an approved place of destination.
 - ◆ A list of these places (in the Czech Republic) is available in BIP's.

Non-compliance with requirements

- ◆ If the consignment is returned, or contaminated part is removed – phytosanitary certificate is marked by stamp with red triangle.



End of inspection

- ◆ In case of compliance with all regulations , the responsible inspector marks phytosanitary certificate with the date of the performance of the inspection and the official stamp.



Charge

- ◆ Inspections in the Czech Republic are still free of charge, but from the 1.1.2005, at the latest, it will be charged.



Thank you