

CENTRAL EUROPEAN INICATIVE
Conference on Implementation of the Phytosanitary Border Control
on new EU External Borders

LEGISLATIVE BASIS FOR IMPORT INSPECTION

*Vlasta KNAPIČ, Mojca CELAR, Phytosanitary
Administration*

Grand Hotel Metropol, Portorož, Slovenia,

7 May 2004



Content

- **Plant protection service**
- **Import legislation**



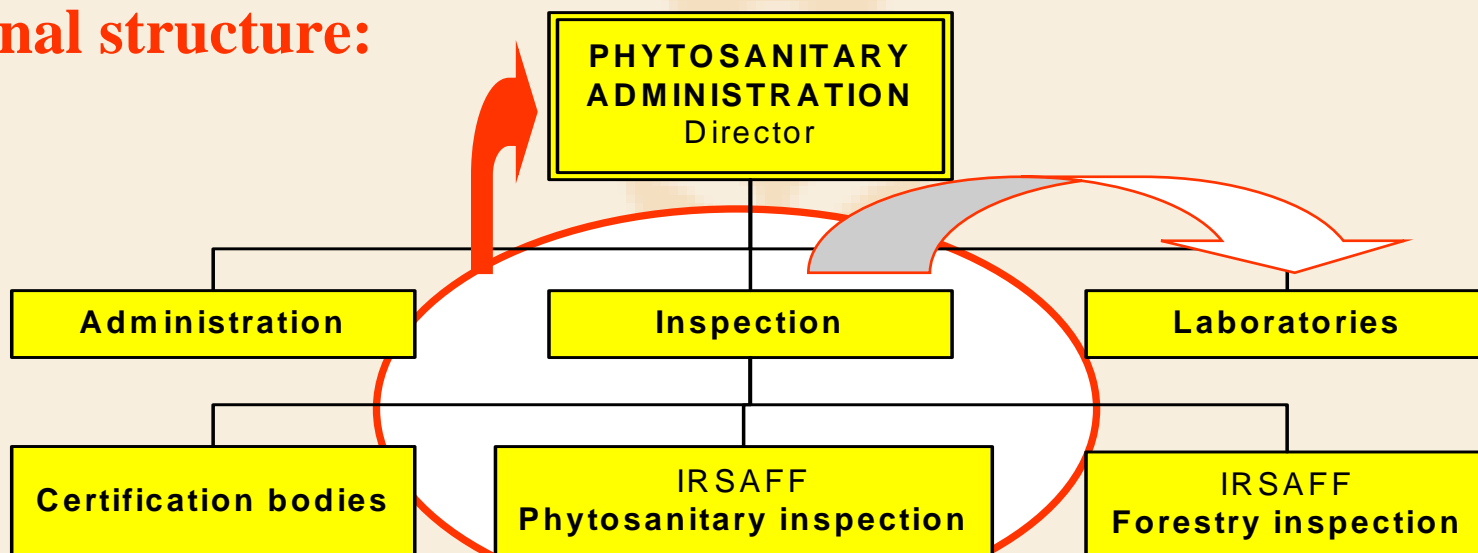
Organisation of PPS

Import

Unified procedures, defined by:

- Legislation
- FITO Information System
- Quality assurance system (inspection manual, written standard operation procedures, forms....)

Functional structure:



Organisation of PPS

Import

- **(1 – central authority)** Phytosanitary Administration of RS, which is the body of MAFF
- **(1 inspection services)** Inspectorate of RS for Agriculture, Forestry and Food, which is the body of MAFF
- **(5 laboratories)** Public institutions authorised and contracted by Administration to supply diagnostic and other scientific and technical work

Import - Legislation

International legislation on plant health:

- **International plant protection convention & standards**
- **European plant protection organisation convention & standards**
- **WTO-SPS (Sanitary and phytosanitary agreement)**
- **EC directives (main 2000/29/EC) & decisions**

National legislation on plant health

EU	Slovene legislation	Adoption	Implement.
2000/29	Plant Health Act	30.6.2001 (31.12.00)	31.12.02
2000/29 (protective measures)	Rules on the Protective Measures Against the Introduction, Spreading and Control of Harmful Organisms of Plants and Plant Products	30.6.2001 (31.03.01)	31.12.02
95/44 (scientific work)	Rules on Control of Certain Harmful Organisms of Other Objects Slovenia for Trade or Scientific Purposes and varietal Selections	<div style="background-color: yellow; padding: 10px; border: 1px solid black;"> <p>PHYTO-RULES; NEW on 5th of May 2004</p> </div>	
			01

PHYTO-RULES

- **On 1st of May 2004 implemented Directives:**
 - **2000/29/EC (OJ L 169, 10. 7. 2000),**
 - **69/466/EEC (OJ L 323/5, 24. 12. 1969) and**
 - **74/647/EEC (OJ L 352/41, 28. 12. 1974)**
- **Phytosanitary requirements at:**
 - **Import**
 - **Transit**
 - **Export (control at places of production)**

PHYTO-Rules / Import

- **Protective measures** with regard to the introduction and spread of harmful organisms in plants, plant products and regulated objects within the Republic of Slovenia as a part of the European Community:
 - phytosanitary inspection at point of entry;
- **lists** of (quarantine) harmful organisms, plants, plant products and other regulated objects subject to these measures;
- **procedures at import** and the manner of inspection
- **measures** in the event of failure to comply with phytosanitary requirements

PHYTO-RULES*

ANNEX dir. 2000/29 Lists	Valid for:			
	EU		PZ	
I – HO banned introduction	A I	A II	B	
II – HO banned introduction with certain plants	A I	A II	B	
III – banned plants	A		B	
IV – special requirements for import and movement	A I	A II	B	
V – mandatory plant health check (place of production / import)	A I	B I	A II	B II

*From 1st of May 2004

Commission Decisions

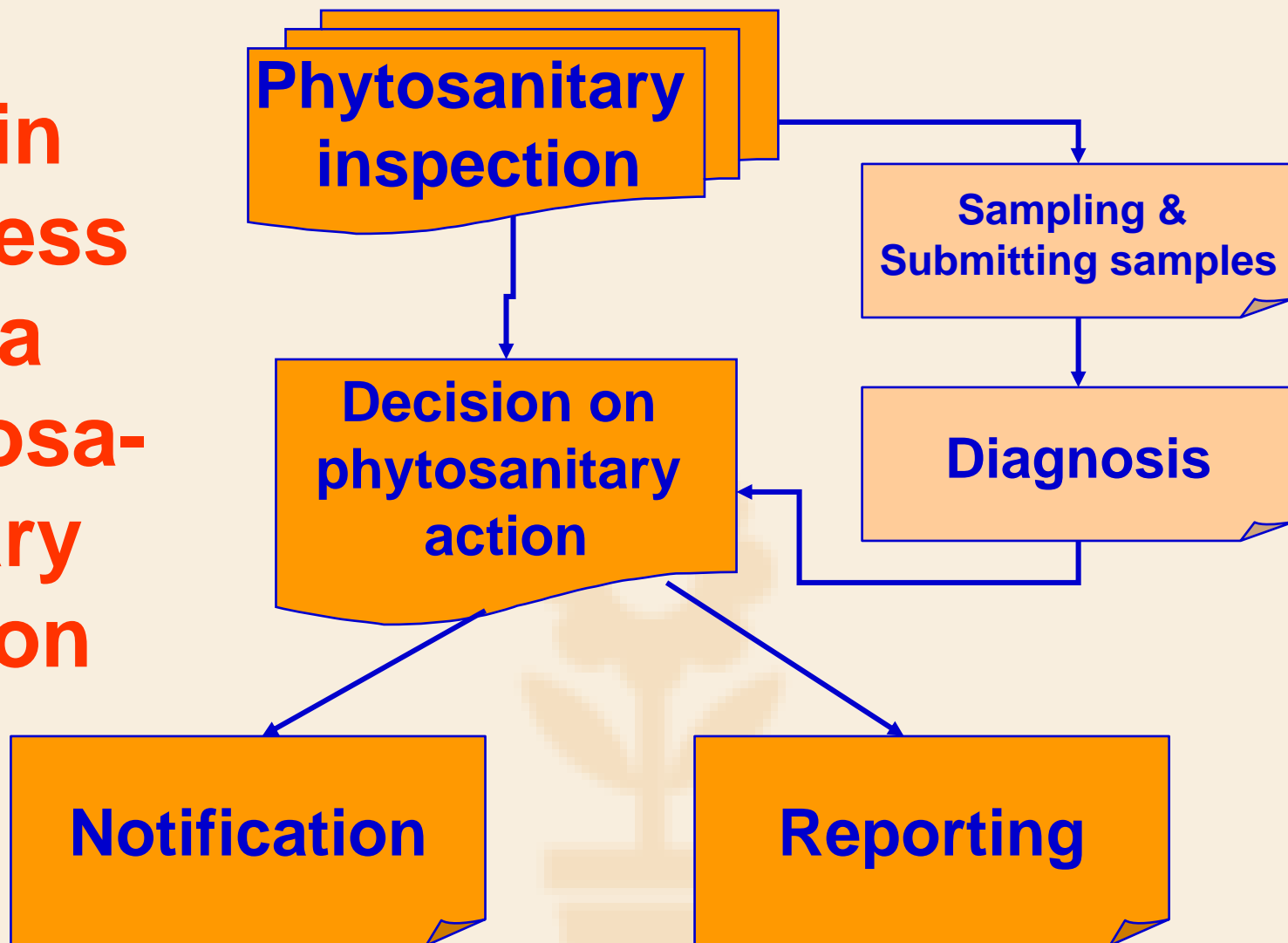
Decisions of the EC, with regard to the import from third countries:

- **2004/4/EC – potatoes from Egypt,**
- **2001/219/EC - non-manufactured coniferous wood originating in Canada, China, Japan and the United States of America,**
- **1999/355/EC on *Anoplophora glabripennis*,**
- **98/109/ES on *Thrips palmi* Karny as regards Thailand,**
- **2004/95/ES on marking heat-treated wood of conifers originating in Canada.**

Application for inspection

- **The importer shall lodge an application with the phytosanitary inspector for inspection at the point of entry of import**
- **Data on:**
 - **Exporter & origin**
 - **consignee**
 - **Consignment & vehicle**
 - **Registration number of importer**
 - **reference to phytosanitary certificate or equivalent document**
- **in written form and shall be attached by all documents, accompanying the consignment.**

**Main
process
of a
Phytosa-
nitary
action**



Measures at import

In case the consignment does not fulfil phytosanitary requirements, it is intercepted and the following measures are ordered:

- **Refuse of entry;**
- **Redirection of the consignment to a place of destination outside the territory of the Community,**
- **Removal of infected/infested part from the consignment;**
- **Destruction;**
- **Quarantine period (pending analysis)**
- **Remediation of documents within a fixed time limit;**
- **Treatment**

Changes of import legislation

- **Inspection of consignments at places others than BIP (2002/89/EC)**
 - **Already possible for the territory of Slovenia**
 - **Basis for plant health&identity check of imported consignments in other Member State will be given by amendments of Plant Health Act**
- **Reduced frequency of inspection (2002/89/EC)**
 - **will be given by amendments of Plant Health Act**
- **Wood packaging material (ISPM 15)**
 - **will be given by amendments of Plant Health Act**

